

Anti-ALDH3A1 antibody



Catalog Number: 104865

Product name

Anti-ALDH3A1 antibody

Immunogen

[Human ALDH3A1 \(His Tag\) recombinant protein](#)

Specificity

Human ALDH3A1

Antibody description

Rabbit polyclonal to ALDH3A1

Preparation

Produced in rabbits immunized with purified, recombinant Human ALDH3A1 (rh ALDH3A1; AAH04370.1; Met1-His453). ALDH3A1 specific IgG was purified by Human ALDH3A1 affinity chromatography.

Formulation

0.2 µm filtered solution in PBS

Storage

This antibody can be stored at 2°C-8°C for one month without detectable loss of activity. Antibody products are stable for twelve months from date of receipt when stored at -20°C to -80°C.

Preservative-Free.

Sodium azide is recommended to avoid contamination (final concentration 0.05%-0.1%). It is toxic to cells and should be disposed of properly. Avoid repeated freeze-thaw cycles.

Clonality

Polyclonal

Ig Type

Rabbit IgG

Applications

ELISA, WB, IHC-P, IP

Dilutions

WB: 2-10 µg/mL

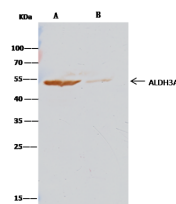
ELISA: 0.1-0.2 µg/mL

This antibody can be used at 0.1-0.2 µg/mL with the appropriate secondary reagents to detect Human ALDH3A1. The detection limit for Human ALDH3A1 is < 0.039 ng/well.

IHC-P: 0.05-1 µg/mL

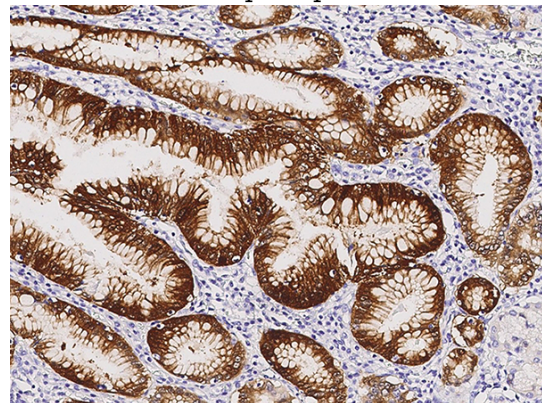
IP: 1-4 µg/mg of lysate

Validations



Items	Lanes	A	B
Sample (whole cell lysate)			A549
Sample quantity			0.5 mg
IP antibody type		ALDH3A1-IP02	Rabbit IgG
IP antibody quantity			2 µg
Protein G agarose		15 µl of 50% Protein G Agarose	
Gel		15% SDS-PAGE reducing gel	
Primary antibody		ALDH3A1 antibody at 2 µg/ml	
Secondary antibody		Clean-Blot IP Detection Reagent (HRP) at 1:1000 dilution	

ALDH3A1 Antibody, Rabbit PAb, Antigen Affinity Purified, Immunoprecipitation



ALDH3A1 Antibody, Rabbit PAb, Antigen Affinity Purified, Immunohistochemistry

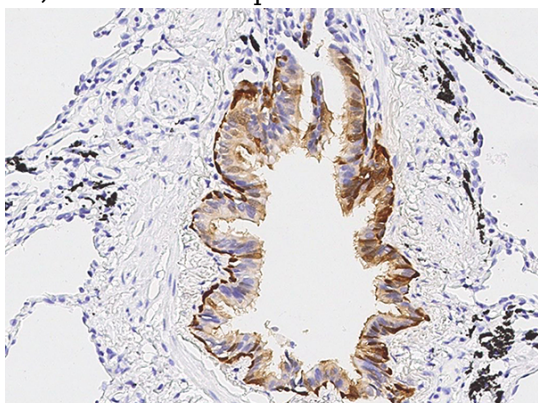
Immunochemical staining of human ALDH3A1 in human stomach with rabbit polyclonal antibody

Anti-ALDH3A1 antibody



Catalog Number: 104865

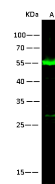
(0.05 µg/mL, formalin-fixed paraffin embedded



sections).

ALDH3A1 Antibody, Rabbit PAb, Antigen Affinity Purified, Immunohistochemistry

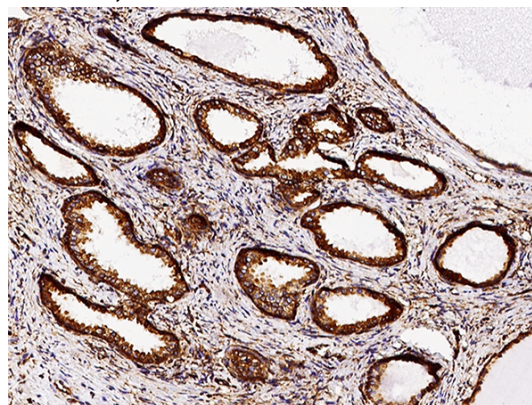
Immunochemical staining of human ALDH3A1 in human lung with rabbit polyclonal antibody (0.05 µg/mL, formalin-fixed paraffin embedded



Lanes	A
Items	
Sample (whole cell lysate)	A549
Sample Volume (µg/lane)	30
Gel	13% SDS-PAGE reducing gel
Recommended Concentration	2-10 µg/ml
Secondary Antibody	Dylight 800 labeled Antibody to Rabbit IgG (H+L), at 1:5000 dilution.
Developed using Odyssey imaging system.	
Explanation	Predicted band size : 50 kDa Observed band size : 55 kDa Additional bands at : 27 kDa (We are unsure as to the identity of these extra bands. They are possible non-specific bindings).

sections).

ALDH3A1 Antibody, Rabbit PAb, Antigen Affinity Purified, Western blot



ALDH3A1 Antibody, Rabbit PAb, Antigen Affinity Purified, Immunohistochemistry