

Anti-ELF3/ESE1 antibody



Catalog Number: 104855

Product name

Anti-ELF3/ESE1 antibody

Specificity

Human ELF3

Antibody description

Rabbit polyclonal to ELF3/ESE1

Preparation

Produced in rabbits immunized with a synthetic peptide corresponding to the center region of the Human ELF3, and purified by antigen affinity chromatography.

Formulation

0.2 μ m filtered solution in PBS

Storage

This antibody can be stored at 2°C-8°C for one month without detectable loss of activity. Antibody products are stable for twelve months from date of receipt when stored at -20°C to -80°C.

Preservative-Free.

Sodium azide is recommended to avoid contamination (final concentration 0.05%-0.1%). It is toxic to cells and should be disposed of properly. Avoid repeated freeze-thaw cycles.

Clonality

Polyclonal

Ig Type

Rabbit IgG

Applications

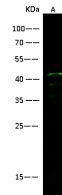
WB, IF, ICC/IF

Dilutions

WB: 10-20 μ g/ml

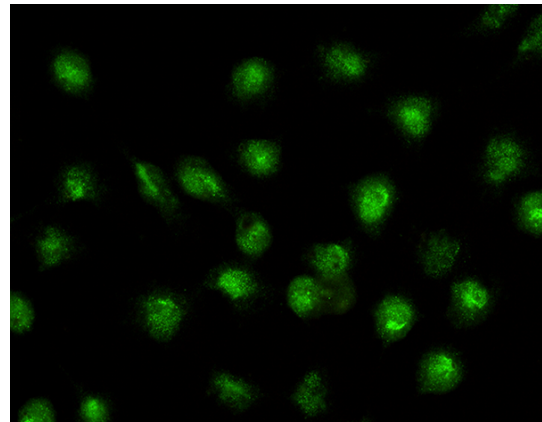
ICC/IF: 1-5 μ g/mL

Validations



Lanes	A
Sample (whole cell lysate)	A431
Sample Volume (μ g/lane)	30
Gel	13% SDS-PAGE reducing gel
Recommended Concentration	10-20 μ g/ml
Secondary Antibody	Dylight 800 labeled Antibody to Rabbit IgG (H+L) at 1:5000 dilution
Explanation	Developed using Odyssey imaging system Predicted band size : 41 kDa Observed band size : 41 kDa Additional bands at : 38 kDa (We are unsure as to the identity of these extra bands.)

ELF3 Antibody, Rabbit PAb, Antigen Affinity Purified, Western blot



ELF3 Antibody, Rabbit PAb, Antigen Affinity Purified, Immunofluorescence

Immunofluorescence staining of ELF3 in A431 cells. Cells were fixed with 4% PFA, blocked with 10% serum, and incubated with rabbit anti-human ELF3 polyclonal antibody (1 μ g/ml) at 4°C overnight. Then cells were stained with the Alexa Fluor®488-conjugated Goat Anti-rabbit IgG secondary antibody (green). Positive staining was localized to cytoplasm and nucleus..