

Anti-IGSF5 antibody



Catalog Number: 104848

Product name

Anti-IGSF5 antibody

Specificity

Human IGSF5

Antibody description

Rabbit polyclonal to IGSF5

Preparation

Produced in rabbits immunized with a synthetic peptide corresponding to the center region of the Human IGSF5, and purified by antigen affinity chromatography.

Formulation

0.2 µm filtered solution in PBS

Storage

This antibody can be stored at 2°C-8°C for one month without detectable loss of activity. Antibody products are stable for twelve months from date of receipt when stored at -20°C to -80°C.

Preservative-Free.

Sodium azide is recommended to avoid contamination (final concentration 0.05%-0.1%). It is toxic to cells and should be disposed of

properly. Avoid repeated freeze-thaw cycles.

Clonality

Polyclonal

Ig Type

Rabbit IgG

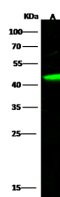
Applications

WB

Dilutions

WB: 5-10 µg/ml

Validations



Items	Lanes
Sample (whole cell lysate)	A
Sample Volume (µg/lane)	293
Gel	30
Recommended Concentration	13% SDS-PAGE reducing gel
Secondary Antibody	5-10 µg/ml
Explanation	Dylight 800-labeled Antibody to Rabbit IgG (H+L), at 1:5000 dilution. Developed using Odyssey imaging system.
	Predicted band size : 45 kDa Observed band size : 45 kDa

IGSF5 Antibody, Rabbit PAb, Antigen Affinity Purified, Western blot