

# Anti-PRMT1/HRMT1L2 antibody



Catalog Number: 104826

## Product name

Anti-PRMT1/HRMT1L2 antibody

IHC-P: 0.1-2 µg/mL

ICC/IF: 0.5-1.5 µg/mL

## Specificity

Human PRMT1

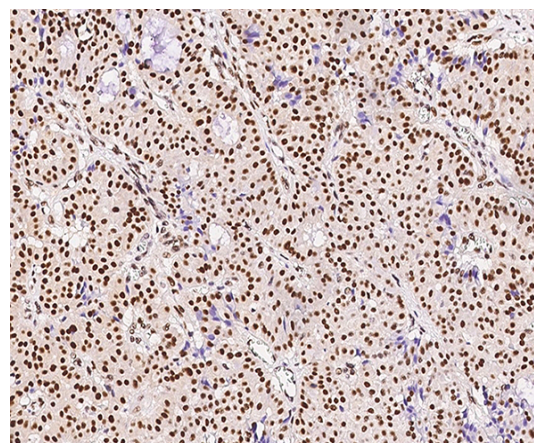
## Validations

## Antibody description

Rabbit polyclonal to PRMT1/HRMT1L2

## Preparation

Produced in rabbits immunized with a synthetic peptide corresponding to the center region of the Human PRMT1, and purified by antigen affinity chromatography.



## Formulation

0.2 µm filtered solution in PBS

PRMT1 Antibody, Rabbit PAb, Antigen Affinity Purified, Immunohistochemistry

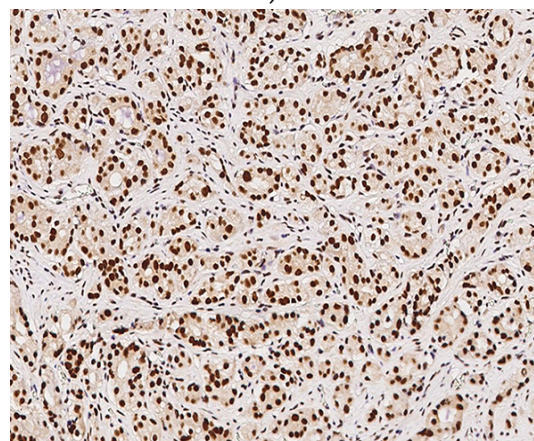
## Storage

This antibody can be stored at 2°C-8°C for one month without detectable loss of activity. Antibody products are stable for twelve months from date of receipt when stored at -20°C to -80°C.

Preservative-Free.

Sodium azide is recommended to avoid contamination (final concentration 0.05%-0.1%). It is toxic to cells and should be disposed of properly. Avoid repeated freeze-thaw cycles.

Immunochemical staining of human PRMT1 in human breast carcinoma with rabbit polyclonal antibody (0.5 µg/mL, formalin-fixed paraffin embedded sections).



## Clonality

Polyclonal

## Ig Type

Rabbit IgG

PRMT1 Antibody, Rabbit PAb, Antigen Affinity Purified, Immunohistochemistry

## Applications

IHC-P, IF

Immunochemical staining of human PRMT1 in human prostatic carcinoma with rabbit polyclonal antibody (0.5 µg/mL, formalin-fixed paraffin embedded sections).

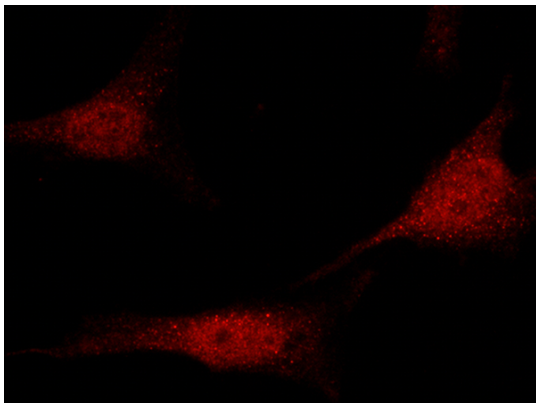
## Dilutions

# Anti-PRMT1/HRMT1L2 antibody



Catalog Number: 104826

---



PRMT1 Antibody, Rabbit PAb, Antigen Affinity Purified, Immunofluorescence

Immunofluorescence staining of PRMT1 in HeLa cells. Cells were fixed with 4% PFA, blocked with 10% serum, and incubated with rabbit anti-human PRMT1 polyclonal antibody (1  $\mu\text{g}/\text{mL}$ ) at 4°C overnight. Then cells were stained with the Alexa Fluor®594-conjugated