

# Anti-GAPDH antibody



Catalog Number: 104818

## Product name

Anti-GAPDH antibody

## Specificity

Human GAPDH

## Antibody description

Rabbit polyclonal to GAPDH

## Preparation

Produced in rabbits immunized with A synthetic peptide corresponding to the center region of the human GAPDH, and purified by antigen affinity chromatography.

## Formulation

0.2 µm filtered solution in PBS

## Storage

This antibody can be stored at 2°C-8°C for one month without detectable loss of activity. Antibody products are stable for twelve months from date of receipt when stored at -20°C to -80°C.

Preservative-Free.

Sodium azide is recommended to avoid contamination (final concentration 0.05%-0.1%). It is toxic to cells and should be disposed of properly. Avoid repeated freeze-thaw cycles.

## Clonality

Polyclonal

## Ig Type

Rabbit IgG

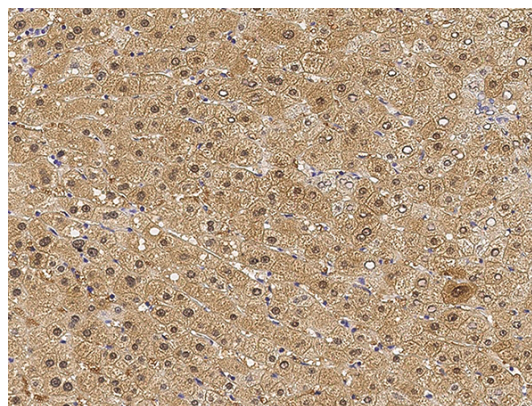
## Applications

IHC-P

## Dilutions

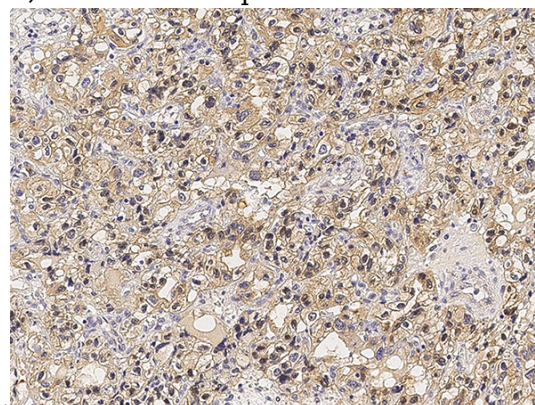
IHC-P: 0.1-2 µg/mL

## Validations



GAPDH Antibody, Rabbit PAb, Antigen Affinity Purified, Immunohistochemistry

Immunochemical staining of human GAPDH in human hepatitis with rabbit polyclonal antibody (0.5 µg/mL, formalin-fixed paraffin embedded



sections).

GAPDH Antibody, Rabbit PAb, Antigen Affinity Purified, Immunohistochemistry

Immunochemical staining of human GAPDH in human renal carcinoma with rabbit polyclonal antibody (0.5 µg/mL, formalin-fixed paraffin embedded sections).