

Anti-SLC27A2 antibody



Catalog Number: 104800

Product name

Anti-SLC27A2 antibody

Specificity

Human SLC27A2

Antibody description

Rabbit polyclonal to SLC27A2

Preparation

Produced in rabbits immunized with a synthetic peptide corresponding to the center region of the Human SLC27A2, and purified by antigen affinity chromatography.

Formulation

0.2 µm filtered solution in PBS

Storage

This antibody can be stored at 2°C-8°C for one month without detectable loss of activity. Antibody products are stable for twelve months from date of receipt when stored at -20°C to -80°C.

Preservative-Free.

Sodium azide is recommended to avoid contamination (final concentration 0.05%-0.1%). It is toxic to cells and should be disposed of properly. Avoid repeated freeze-thaw cycles.

Clonality

Polyclonal

Ig Type

Rabbit IgG

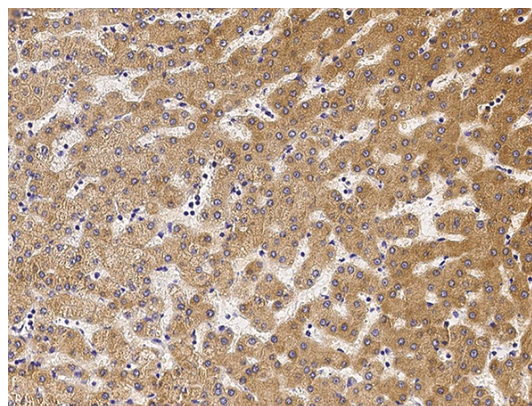
Applications

IHC-P

Dilutions

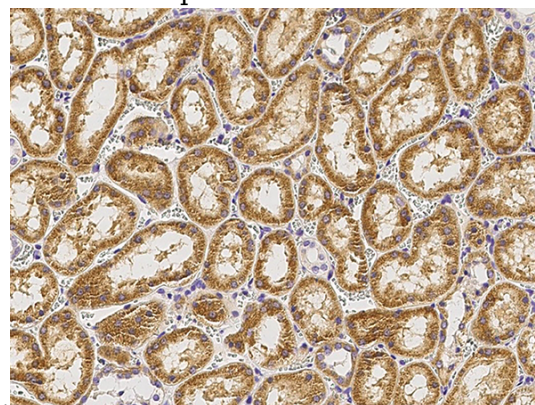
IHC-P: 0.1-2 µg/mL

Validations



SLC27A2 Antibody, Rabbit PAb, Antigen Affinity Purified, Immunohistochemistry

Immunochemical staining of human SLC27A2 in human liver with rabbit polyclonal antibody (1 µg/mL, formalin-fixed paraffin embedded



sections).

SLC27A2 Antibody, Rabbit PAb, Antigen Affinity Purified, Immunohistochemistry

Immunochemical staining of human SLC27A2 in human kidney with rabbit polyclonal antibody (1 µg/mL, formalin-fixed paraffin embedded sections).