

# Anti-nemo-like kinase antibody



Catalog Number: 104731

## Product name

Anti-nemo-like kinase antibody

## Immunogen

[Human nemo-like kinase \(His & GST Tag\) recombinant protein](#)

## Specificity

Human nemo-like kinase

## Antibody description

Rabbit polyclonal to nemo-like kinase

## Preparation

Produced in rabbits immunized with purified, recombinant Human nemo-like kinase (rh nemo-like kinase ; Q9UBE8; Val121-Glu527). nemo-like kinase specific IgG was purified by Human nemo-like kinase affinity chromatography.

## Formulation

0.2 µm filtered solution in PBS

## Storage

This antibody can be stored at 2°C-8°C for one month without detectable loss of activity. Antibody products are stable for twelve months from date of receipt when stored at -20°C to -80°C.

Preservative-Free.

Sodium azide is recommended to avoid contamination (final concentration 0.05%-0.1%). It is toxic to cells and should be disposed of

properly. Avoid repeated freeze-thaw cycles.

## Clonality

Polyclonal

## Ig Type

Rabbit IgG

## Applications

ELISA, WB

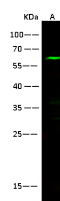
## Dilutions

WB: 10-20 µg/mL

ELISA: 0.1-0.2 µg/mL

This antibody can be used at 0.1-0.2 µg/mL with the appropriate secondary reagents to detect Human nemo-like kinase. The detection limit for Human nemo-like kinase is < 0.039 ng/well.

## Validations



Items	Lanes
Sample (whole cell lysate)	A
Sample Volume (µg/lane)	Hela
Gel	30
Recommended Concentration	13% SDS-PAGE reducing gel
Secondary Antibody	10-20 µg/ml
Explanation	Dylight 800-labeled Antibody To Rabbit IgG (H+L), at 1:5000 dilution. Developed using Odyssey imaging system.
Explanation	Predicted band size : 58 kDa Observed band size : 58 kDa

nemo-like kinase Antibody, Rabbit PAb, Antigen Affinity Purified, Western blot