

Anti-BVES / POPDC1 antibody



Catalog Number: 104693

Product name

Anti-BVES / POPDC1 antibody

Specificity

Human BVES / POPDC1

Antibody description

Rabbit polyclonal to BVES / POPDC1

Preparation

Produced in rabbits immunized with a synthetic peptide corresponding to the center region of the Human BVES / POPDC1, and purified by antigen affinity chromatography.

Formulation

0.2 µm filtered solution in PBS

Storage

This antibody can be stored at 2°C-8°C for one month without detectable loss of activity. Antibody products are stable for twelve months from date of receipt when stored at -20°C to -80°C.

Preservative-Free.

Sodium azide is recommended to avoid contamination (final concentration 0.05%-0.1%). It is toxic to cells and should be disposed of properly. Avoid repeated freeze-thaw cycles.

Clonality

Polyclonal

Ig Type

Rabbit IgG

Applications

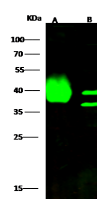
WB, IHC-P

Dilutions

WB: 0.5-5 µg/ml

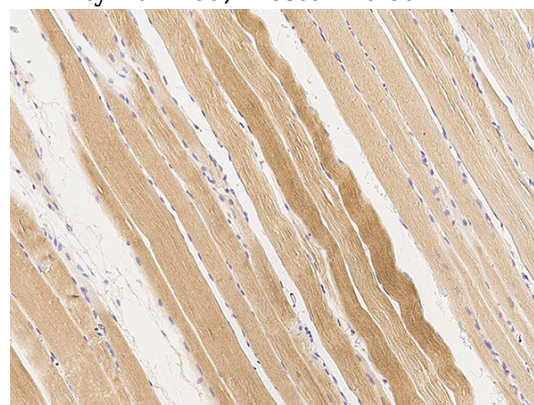
IHC-P: 0.1-2 µg/mL

Validations



Items	Lanes	A	B
Sample		Mouse skeletal muscle tissue lysate	293 (whole cell lysate)
Sample Volume (µg/lane)		30	30
Gel		13% SDS-PAGE reducing gel	
Recommended Concentration		0.5-5 µg/ml	
Secondary Antibody		Dylight 800 labeled Antibody to Rabbit IgG (1:1), at 1:5000 dilution.	
Developed using Odyssey imaging system.			
Explanation		Predicted band size : 41 kDa Observed band size : 40 kDa	

BVES / POPDC1 Antibody, Rabbit PAb, Antigen Affinity Purified, Western blot



BVES / POPDC1 Antibody, Rabbit PAb, Antigen Affinity Purified, Immunohistochemistry

Immunochemical staining of human BVES in human skeletal muscle with rabbit polyclonal antibody (1 µg/mL, formalin-fixed paraffin embedded sections).