

# Anti-GDF-3 antibody



Catalog Number: 104634

## Product name

Anti-GDF-3 antibody

## Specificity

Human GDF-3

## Antibody description

Rabbit monoclonal to GDF-3

## Preparation

This antibody was obtained from a rabbit immunized with a synthetic peptide corresponding to the center region of the Human GDF-3, and purified by antigen affinity chromatography.

## Formulation

0.2 µm filtered solution in PBS

## Storage

This antibody can be stored at 2°C-8°C for one month without detectable loss of activity. Antibody products are stable for twelve months from date of receipt when stored at -20°C to -80°C.

Preservative-Free.

Sodium azide is recommended to avoid contamination (final concentration 0.05%-0.1%). It is toxic to cells and should be disposed of properly. Avoid repeated freeze-thaw cycles.

## Clonality

Monoclonal

## Ig Type

Rabbit IgG

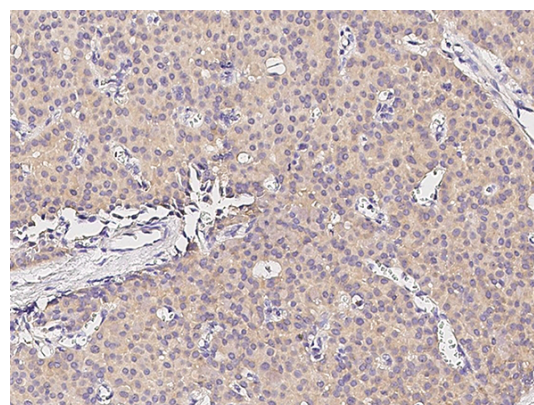
## Applications

IHC-P

## Dilutions

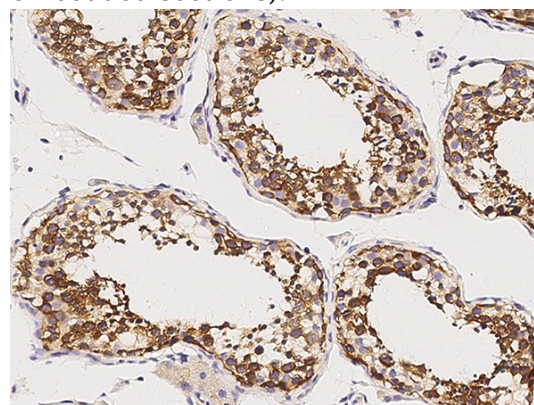
IHC-P: 5-20 µg/mL

## Validations



GDF-3 Antibody, Rabbit MAb,  
Immunohistochemistry

Immunochemical staining of human GDF3 in human breast carcinoma with rabbit monoclonal antibody (10 µg/mL, formalin-fixed paraffin embedded sections).



GDF-3 Antibody, Rabbit MAb,  
Immunohistochemistry

Immunochemical staining of human GDF3 in human testis with rabbit monoclonal antibody (10 µg/mL, formalin-fixed paraffin embedded sections).