

Anti-CREB1 antibody



Catalog Number: 104584

Product name

Anti-CREB1 antibody

Specificity

Human CREB1

Antibody description

Mouse monoclonal to CREB1

Preparation

This antibody was produced from a hybridoma resulting from the fusion of a mouse myeloma with B cells obtained from a mouse immunized with purified, recombinant Human CREB1 (rh CREB1; P16220-2; Met1-Asp327). The IgG fraction of the cell culture supernatant was purified by Protein A affinity chromatography.

Formulation

0.2 μm filtered solution in PBS

Storage

This antibody can be stored at 2°C-8°C for one month without detectable loss of activity. Antibody products are stable for twelve months from date of receipt when stored at -20°C to -80°C.

Preservative-Free.

Sodium azide is recommended to avoid contamination (final concentration 0.05%-0.1%). It is toxic to cells and should be disposed of properly. Avoid repeated freeze-thaw cycles.

Clonality

Monoclonal

Ig Type

Mouse IgG2b

Applications

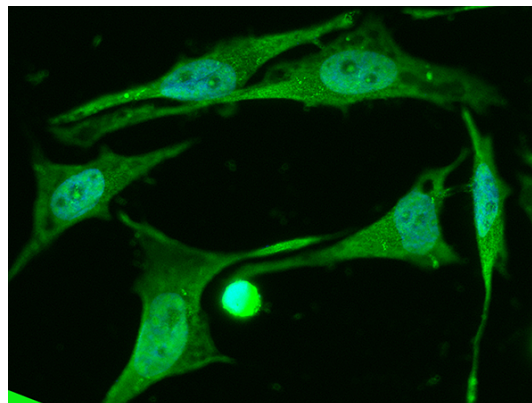
FCM, IF, ICC/IF

Dilutions

FCM: 0.5-2 $\mu\text{g}/\text{Test}$

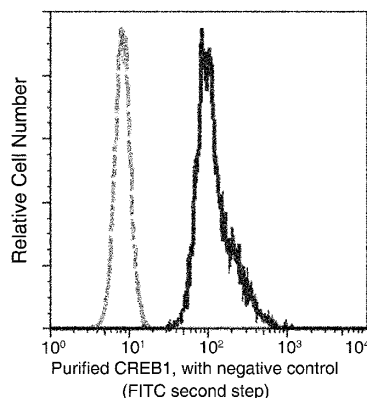
ICC/IF: 10-25 $\mu\text{g}/\text{mL}$

Validations



CREB1 Antibody, Mouse MAb, Immunofluorescence

Immunofluorescence staining of Human CREB1 in Hela cells. Cells were fixed with 4% PFA, permeabilized with 0.3% Triton X-100 in PBS, blocked with 10% serum, and incubated with Mouse anti-Human CREB1 monoclonal antibody (15 $\mu\text{g}/\text{ml}$) at 37°C 1 hour. Then cells were stained with the Alexa Fluor® 488-conjugated Goat Anti-mouse IgG secondary antibody (green) and counterstained with DAPI (blue). Positive staining was localized to nucleus.



CREB1 Antibody, Mouse MAb

Flow cytometric analysis of Human CREB1 expression on HepG2 cells. The cells were treated

Anti-CREB1 antibody



Catalog Number: 104584

according to manufacturer's manual (BD Pharmingen™ Cat. No. 554714), stained with purified anti-Human CREB1, then a FITC-conjugated second step antibody. The

fluorescence histograms were derived from gated events with the forward and side light-scatter characteristics of intact cells.