

# Anti-CBFB / CBF-beta antibody



Catalog Number: 104575

## Product name

Anti-CBFB / CBF-beta antibody

## Immunogen

[Human CBFB / CBF-beta \(His Tag\) recombinant protein](#)

## Specificity

Human CBFB / CBF-beta

## Antibody description

Rabbit polyclonal to CBFB / CBF-beta

## Preparation

Produced in rabbits immunized with purified, recombinant Human CBFB / CBF-beta (rh CBFB / CBF-beta; Q13951-1; Met1-Pro182). CBFB / CBF-beta specific IgG was purified by Human CBFB / CBF-beta affinity chromatography.

## Formulation

0.2 µm filtered solution in PBS

## Storage

This antibody can be stored at 2°C-8°C for one month without detectable loss of activity. Antibody products are stable for twelve months from date of receipt when stored at -20°C to -80°C.

Preservative-Free.

Sodium azide is recommended to avoid contamination (final concentration 0.05%-0.1%). It is toxic to cells and should be disposed of properly. Avoid repeated freeze-thaw cycles.

## Clonality

Polyclonal

## Ig Type

Rabbit IgG

## Applications

ELISA, WB, IP

## Dilutions

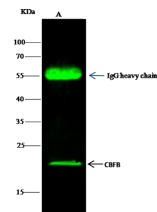
WB: 5-10 µg/mL

ELISA: 0.1-0.2 µg/mL

This antibody can be used at 0.1-0.2 µg/mL with the appropriate secondary reagents to detect Human CBFB / CBF-beta. The detection limit for Human CBFB / CBF-beta is < 0.039 ng/well.

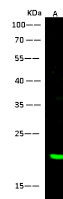
IP: 4-6 µg/mg of lysate

## Validations



Items	Lanes	A
Sample (whole cell lysate)		HeLa
Sample quantity		0.5 mg
IP antibody quantity		2 µg
Protein G agarose		15 µl of 50% Protein G Agarose
Gel		13% SDS-PAGE reducing gel
Primary antibody		His-CBFB antibody at 5 µg/ml [Cat# 14569-R102]
Secondary antibody		Dylight 800-labeled antibody to rabbit IgG (H+L), at 1:5000 dilution

CBFB / CBF-beta Antibody, Rabbit PAb, Antigen Affinity Purified, Immunoprecipitation



Items	Lanes	A
Sample (whole cell lysate)		HeLa
Sample volume (µg/lane)		30
Gel		13% SDS-PAGE reducing gel
Recommended concentration		5-10 µg/ml
Secondary Antibody		Dylight 800-labeled Antibody to Rabbit IgG (H+L), at 1:5000 dilution
		Developed using Odyssey imaging system
Explanation		Predicted band size : 22 kDa Observed band size : 22 kDa

CBFB / CBF-beta Antibody, Rabbit PAb, Antigen Affinity Purified, Western blot