

Product name

Anti-Mcl-1 antibody

Specificity

Human MCL1

Antibody description

Rabbit polyclonal to Mcl-1

Preparation

Produced in rabbits immunized with a synthetic peptide corresponding to the center region of the Human MCL1, and purified by antigen affinity chromatography.

Formulation

0.2 µm filtered solution in PBS

Storage

This antibody can be stored at 2°C-8°C for one month without detectable loss of activity. Antibody products are stable for twelve months from date of receipt when stored at -20°C to -80°C.

Preservative-Free.

Sodium azide is recommended to avoid contamination (final concentration 0.05%-0.1%). It is toxic to cells and should be disposed of properly. Avoid repeated freeze-thaw cycles.

Clonality

Polyclonal

Ig Type

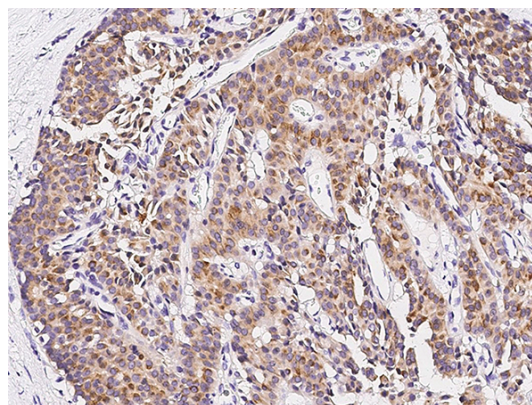
Rabbit IgG

Applications

IHC-P

Dilutions

IHC-P: 0.05-1 µg/mL

Validations

MCL1 Antibody, Rabbit PAb, Antigen Affinity Purified, Immunohistochemistry

Immunochemical staining of human MCL1 in human breast carcinoma with rabbit polyclonal antibody (1 µg/mL, formalin-fixed paraffin embedded sections).