

Anti-PPIL1 antibody



Catalog Number: 104516

Product name

Anti-PPIL1 antibody

Immunogen

[Human PPIL1 \(His Tag\) recombinant protein](#)

Specificity

Human PPIL1

Antibody description

Rabbit polyclonal to PPIL1

Preparation

Produced in rabbits immunized with purified, recombinant Human PPIL1 (rh PPIL1; Q9Y3C6; Met1-Gly166). PPIL1 specific IgG was purified by Human PPIL1 affinity chromatography.

Formulation

0.2 µm filtered solution in PBS with 5% trehalose

Storage

This antibody can be stored at 2°C-8°C for one month without detectable loss of activity. Antibody products are stable for twelve months from date of receipt when stored at -20°C to -80°C.

Preservative-Free.

Sodium azide is recommended to avoid contamination (final concentration 0.05%-0.1%). It is toxic to cells and should be disposed of properly. Avoid repeated freeze-thaw cycles.

Clonality

Polyclonal

Ig Type

Rabbit IgG

Applications

ELISA, WB, IHC-P, IP

Dilutions

WB: 5-10 µg/ml

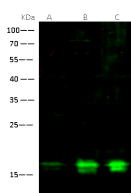
ELISA: 0.1-0.2 µg/mL

This antibody can be used at 0.1-0.2 µg/mL with the appropriate secondary reagents to detect Human PPIL1. The detection limit for Human PPIL1 is < 0.039 ng/well.

IHC-P: 0.1-1 µg/ml

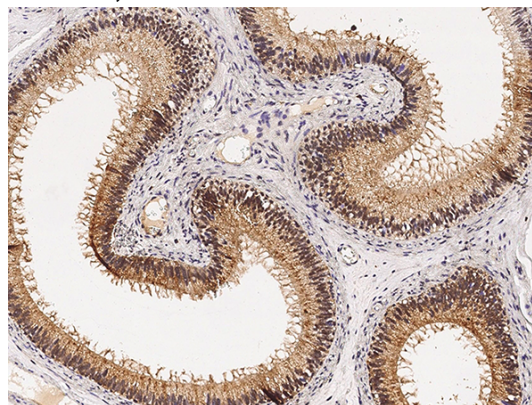
IP: 1-4 µg/mg of lysate

Validations



Lanes	A	B	C
Items			
Sample (whole cell lysate)	U87-MG	HeLa	K562
Sample Volume (µg/lane)	30	30	30
Gel	13% SDS-PAGE reducing gel		
Recommended concentration	5-10 µg/ml		
Secondary Antibody	Dylight 800 labeled Antibody to Rabbit IgG (rhL), at 1:5000 dilution		
Developed using Odyssey imaging system.			
Explanation	Predicted band size : 18 kDa Observed band size : 17 kDa		

PPIL1 Antibody, Rabbit PAb, Antigen Affinity Purified, Western blot



PPIL1 Antibody, Rabbit PAb, Antigen Affinity Purified, Immunohistochemistry

Immunochemical staining of human PPIL1 in human epididymis with rabbit polyclonal antibody

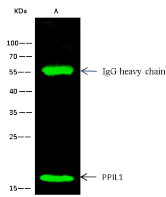
Anti-PPIL1 antibody



Catalog Number: 104516

(0.2 µg/mL, formalin-fixed paraffin embedded

PPIL1 Antibody, Rabbit PAb, Antigen Affinity Purified, Immunoprecipitation



Items	Lanes
Sample (whole cell lysate)	A HepG2
Sample quantity	0.5 mg
IP antibody quantity	2 µg
Protein G agarose gel	15 µl of 50% Protein G Agarose 18% SDS-PAGE reducing gel
Primary antibody	PPIL1 antibody at 10 µg/ml [Cat# 14163-PP02]
Secondary antibody	Dylight 800-labeled antibody to rabbit IgG (H-L) at 1:5000 dilution

sections).