

Anti-GGCT antibody



Catalog Number: 104509

Product name

Anti-GGCT antibody

Immunogen

[Human GGCT \(His Tag\) recombinant protein](#)

Specificity

Human GGCT

Antibody description

Rabbit polyclonal to GGCT

Preparation

Produced in rabbits immunized with purified, recombinant Human GGCT (rh GGCT; O75223-1; Met1-Leu188). GGCT specific IgG was purified by Human GGCT affinity chromatography.

Formulation

0.2 µm filtered solution in PBS

Storage

This antibody can be stored at 2°C-8°C for one month without detectable loss of activity. Antibody products are stable for twelve months from date of receipt when stored at -20°C to -80°C.

Preservative-Free.

Sodium azide is recommended to avoid contamination (final concentration 0.05%-0.1%). It is toxic to cells and should be disposed of properly. Avoid repeated freeze-thaw cycles.

Clonality

Polyclonal

Ig Type

Rabbit IgG

Applications

ELISA, WB, IHC-P, IP

Dilutions

WB: 1-10 µg/mL

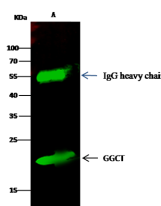
ELISA: 0.1-0.2 µg/mL

This antibody can be used at 0.1-0.2 µg/mL with the appropriate secondary reagents to detect Human GGCT. The detection limit for Human GGCT is < 0.039 ng/well.

IHC-P: 0.1-1 µg/mL

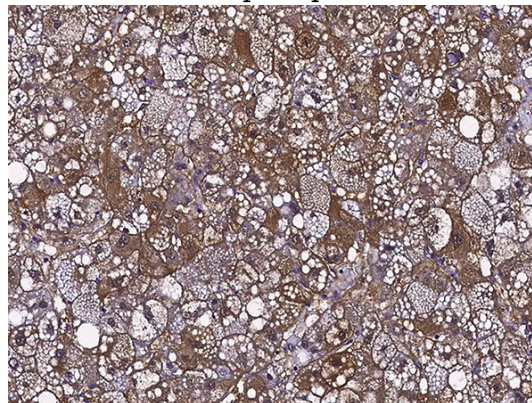
IP: 1-4 µg/mg of lysate

Validations



Items	Lanes	A
Sample (whole cell lysate)		293T
Sample quantity		0.5 mg
IP antibody quantity		2 µg
Protein G agarose		15 µl of 50% Protein G Agarose
Gel		15% SDS-PAGE reducing gel
Primary antibody		His-GGCT antibody at 5 µg/ml
Secondary antibody		Dylight 800 labeled antibody to rabbit IgG (R+L), at 1:5000 dilution

GGCT Antibody, Rabbit PAb, Antigen Affinity Purified, Immunoprecipitation



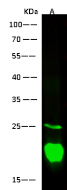
GGCT Antibody, Rabbit PAb, Antigen Affinity Purified

Immunochemical staining of human GGCT in human hepatoma with rabbit polyclonal antibody

Anti-GGCT antibody

Catalog Number: 104509

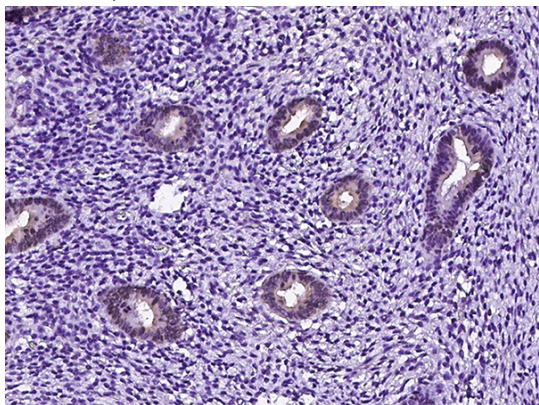
(0.1 µg/mL, formalin-fixed paraffin embedded



Lanes	A
Items	
Sample (whole cell lysate)	293
Sample Volume (µg/lane)	30
Gel	13% SDS-PAGE reducing gel
Recommended Concentration	1-10 µg/ml
Secondary Antibody	Dylight 800-labeled Antibody To Rabbit IgG (H+L), at 1:5000 dilution.
Developed using Odyssey imaging system.	
Explanation	Predicted band size : 21 kDa Observed band size : 21 kDa Additional bands at : 25 kDa

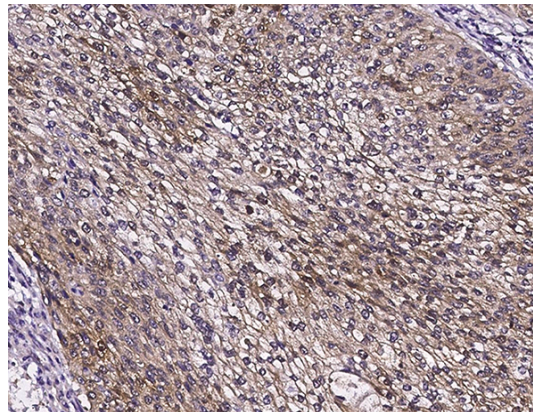
sections).

GGCT Antibody, Rabbit PAb, Antigen Affinity Purified, Western blot



GGCT Antibody, Rabbit PAb, Antigen Affinity Purified

Immunochemical staining of human GGCT in human corpus uteri with rabbit polyclonal antibody (0.1 µg/mL, formalin-fixed paraffin embedded sections).



GGCT Antibody, Rabbit PAb, Antigen Affinity Purified

Immunochemical staining of human GGCT in human lung cancer with rabbit polyclonal antibody (0.1 µg/mL, formalin-fixed paraffin embedded sections).