

# Anti-HCV-E2 antibody



Catalog Number: 104482

## Product name

Anti-HCV-E2 antibody

## Immunogen

[HCV HCV-E2 \(His Tag\) recombinant protein](#)

## Specificity

Hepatitis C virus (HCV-1a) E2

## Antibody description

Rabbit polyclonal to HCV-E2

## Preparation

Produced in rabbits immunized with purified, recombinant Hepatitis C virus (HCV-1a) E2 (NP\_751921.1; Glu1-Glu278). Hepatitis C virus (HCV-1a) E2 specific IgG was purified by Hepatitis C virus (HCV-1a) E2 affinity chromatography.

## Formulation

0.2 µm filtered solution in PBS

## Storage

This antibody can be stored at 2°C-8°C for one month without detectable loss of activity. Antibody products are stable for twelve months from date of receipt when stored at -20°C to -80°C.

Preservative-Free.

Sodium azide is recommended to avoid contamination (final concentration 0.05%-0.1%). It is toxic to cells and should be disposed of

properly. Avoid repeated freeze-thaw cycles.

## Clonality

Polyclonal

## Ig Type

Rabbit IgG

## Applications

ELISA, WB, IHC-P

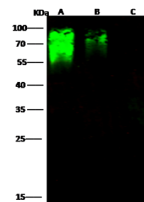
## Dilutions

WB: 0.5-1 µg/ml

ELISA: 0.1-0.2 µg/ml

This antibody can be used at 0.1-0.2 µg/ml with the appropriate secondary reagents to detect Hepatitis C virus E2.

## Validations



Items	Lanes	A	B	C
Sample (Recombinant protein)		S3-E2-His (cat#40280-V08H)		
Sample Volume (ng/lane)		20	5	1
Gel		13% SDS-PAGE reducing gel		
Recommended Concentration		1 µg/ml		
Secondary Antibody		Dylight 800-labeled Antibody To Rabbit IgG (H+L), at 1:5000 dilution. Developed using Odyssey imaging system.		

Hepatitis C virus (HCV-1a) E2 Antibody, Rabbit PAb, Antigen Affinity Purified, Western blot