

# Anti-UBE2D1 antibody



Catalog Number: 104475

## Product name

Anti-UBE2D1 antibody

## Specificity

Human UBE2D1 / UBCH5

## Antibody description

Rabbit polyclonal to UBE2D1

## Preparation

Produced in rabbits immunized with purified, recombinant Human UBE2D1 / UBCH5 (rh UBE2D1 / UBCH5; P51668; Ala2-Met147). UBE2D1 / UBCH5 specific IgG was purified by Human UBE2D1 / UBCH5 affinity chromatography.

## Formulation

0.2 µm filtered solution in PBS with 5% trehalose

## Storage

This antibody can be stored at 2°C-8°C for one month without detectable loss of activity. Antibody products are stable for twelve months from date of receipt when stored at -20°C to -80°C.

Preservative-Free.

Sodium azide is recommended to avoid contamination (final concentration 0.05%-0.1%). It is toxic to cells and should be disposed of properly. Avoid repeated freeze-thaw cycles.

## Clonality

Polyclonal

## Ig Type

Rabbit IgG

## Applications

ELISA, WB

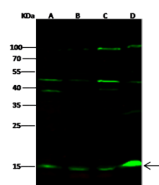
## Dilutions

WB: 5-10 µg/mL

ELISA: 0.1-0.2 µg/mL

This antibody can be used at 0.1-0.2 µg/mL with the appropriate secondary reagents to detect Human UBE2D1 / UBCH5. The detection limit for Human UBE2D1 / UBCH5 is approximately 0.00975 ng/well.

## Validations



	Lanes			
Items	A	B	C	D
Sample (whole cell lysate)	HeLa	293T	Jurkat	293
Sample Volume (µg/lane)	30			
Gel	13% SDS-PAGE reducing gel			
Recommended Concentration	5-10 µg/ml			
Secondary Antibody	Dylight 800-labeled Antibody To Rabbit IgG (H+L), at 1:5000 dilution.			

UBE2D1 / UBCH5 Antibody, Rabbit PAb, Antigen Affinity Purified, Western blot