

Anti-YWHAH antibody



Catalog Number: 104459

Product name

Anti-YWHAH antibody

Immunogen

[Human YWHAH \(GST Tag\) recombinant protein](#)

Specificity

Human 14-3-3 eta / YWHAH

Antibody description

Rabbit polyclonal to YWHAH

Preparation

Produced in rabbits immunized with purified, recombinant Human 14-3-3 eta / YWHAH (rh 14-3-3 eta / YWHAH; Q04917; Gly2-Asn246). 14-3-3 eta / YWHAH specific IgG was purified by Human 14-3-3 eta / YWHAH affinity chromatography.

Formulation

0.2 µm filtered solution in PBS with 5% trehalose

Storage

This antibody can be stored at 2°C-8°C for one month without detectable loss of activity. Antibody products are stable for twelve months from date of receipt when stored at -20°C to -80°C. Preservative-Free.

Sodium azide is recommended to avoid contamination (final concentration 0.05%-0.1%). It is toxic to cells and should be disposed of properly. Avoid repeated freeze-thaw cycles.

Clonality

Polyclonal

Ig Type

Rabbit IgG

Applications

ELISA, WB, IP

Dilutions

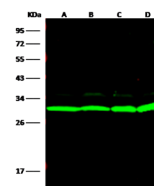
WB: 0.1-0.5 µg/mL

ELISA: 0.1-0.2 µg/mL

This antibody can be used at 0.1-0.2 µg/mL with the appropriate secondary reagents to detect Human 14-3-3 eta / YWHAH. The detection limit for Human 14-3-3 eta / YWHAH is approximately 0.00245 ng/well.

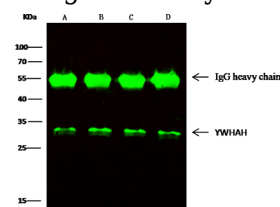
IP: 1-4 µg/mg of lysate

Validations



| Items | Lanes | A | B | C | D |
|----------------------------|-------|---|------|--------|------|
| Sample (whole cell lysate) | | U937 | 293T | Jurkat | K562 |
| Sample Volume (µl/lane) | | 30 | | | |
| Gel | | 13% SDS-PAGE reducing gel | | | |
| Recommended Concentration | | 0.1-0.5 µg/ml | | | |
| Secondary Antibody | | Dylight 800-labeled Antibody To Rabbit IgG (H+L), at 1:5000 dilution. | | | |

14-3-3 eta / YWHAH Antibody, Rabbit PAb, Antigen Affinity Purified, Western blot



| Items | Lanes | A | B | C | D |
|----------------------------|-------|---|--------|------|---------|
| Sample (whole cell lysate) | | 293T | JURKAT | K562 | NIH/3T3 |
| Sample quantity | | 0.5 mg | | | |
| IP antibody quantity | | 2 µg | | | |
| Protein G agarose | | 15 µl of 50% Protein G Agarose | | | |
| Gel | | 13% SDS-PAGE reducing gel | | | |
| Primary antibody | | YWHAH antibody at 0.5 µg/ml [Cat# 10847-RP02] | | | |
| Secondary antibody | | Dylight 800-labeled antibody to rabbit IgG (H+L), at 1:5000 dilution. | | | |

14-3-3 eta / YWHAH Antibody, Rabbit PAb, Antigen Affinity Purified, Immunoprecipitation