

Anti-SerpinB1/ELANH2 antibody



Catalog Number: 104455

Product name

Anti-SerpinB1/ELANH2 antibody

Immunogen

[Human SerpinB1/ELANH2 \(His Tag\) recombinant protein](#)

Specificity

Human SerpinB1 / ELANH2

Antibody description

Mouse monoclonal to SerpinB1/ELANH2

Preparation

This antibody was produced from a hybridoma resulting from the fusion of a mouse myeloma with B cells obtained from a mouse immunized with purified, recombinant Human SerpinB1 / ELANH2 (rh SerpinB1 / ELANH2; P30740; Met1-Pro379). The IgG fraction of the cell culture supernatant was purified by Protein A affinity chromatography.

Formulation

0.2 µm filtered solution in PBS with 5% trehalose

Storage

This antibody can be stored at 2°C-8°C for one month without detectable loss of activity. Antibody products are stable for twelve months from date of receipt when stored at -20°C to -80°C.

Preservative-Free.

Sodium azide is recommended to avoid contamination (final concentration 0.05%-0.1%). It is toxic to cells and should be disposed of properly. Avoid repeated freeze-thaw cycles.

Clonality

Monoclonal

Ig Type

Mouse IgG1

Applications

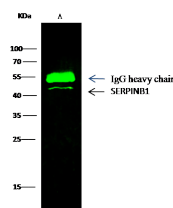
WB, IP

Dilutions

WB: 5-10 µg/mL

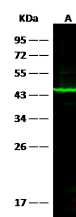
IP: 4-10 µg/mg of lysate

Validations



| Items | Lanes | A |
|----------------------------|-------|----------------------------------------------------------------------|
| Sample (whole cell lysate) | | 293T |
| Sample quantity | | 0.5 mg |
| IP antibody quantity | | 2 µg |
| Protein G agarose | | 15 µl of 50% Protein G Agarose |
| Gel | | 13% SDS-PAGE reducing gel |
| Primary antibody | | SerpinB1 antibody at 10 µg/ml [Cat# 12588-M005] |
| Secondary antibody | | Dylight 800-labeled antibody to mouse IgG (H+L), at 1:7500 dilution. |

SerpinB1 / ELANH2 Antibody, Mouse MAb,



| Items | Lanes | A |
|----------------------------|-------|----------------------------------------------------------------------|
| Sample (whole cell lysate) | | NCI-H460 |
| Sample Volume (µg/lane) | | 30 |
| Gel | | 13% SDS-PAGE reducing gel |
| Recommended Concentration | | 5-10 µg/ml |
| Secondary Antibody | | Dylight 800-labeled Antibody To Mouse IgG (H+L), at 1:7500 dilution. |

Immunoprecipitation

SerpinB1 / ELANH2 Antibody, Mouse MAb,
Western blot