

Anti-Ki67 / MKI67 antibody



Catalog Number: 104430

Product name

Anti-Ki67 / MKI67 antibody

Specificity

Human Ki-67

Antibody description

Rabbit polyclonal to Ki67 / MKI67

Preparation

Produced in rabbits immunized with purified, a synthetic peptide corresponding to the sequence of the Human Ki-67, and purified by antigen affinity chromatography.

Formulation

0.2 µm filtered solution in PBS with 5% trehalose

Storage

This antibody can be stored at 2°C-8°C for one month without detectable loss of activity. Antibody products are stable for twelve months from date of receipt when stored at -20°C to -80°C.

Preservative-Free.

Sodium azide is recommended to avoid contamination (final concentration 0.05%-0.1%). It is toxic to cells and should be disposed of properly. Avoid repeated freeze-thaw cycles.

Clonality

Polyclonal

Ig Type

Rabbit IgG

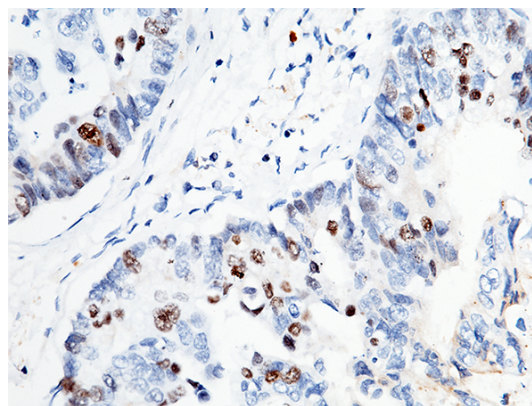
Applications

IHC-P

Dilutions

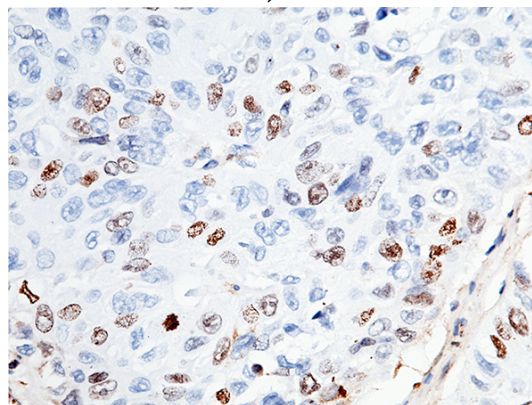
IHC-P: 0.5-3 µg/mL

Validations



Ki-67 Antibody, Rabbit PAb, Antigen Affinity Purified, Immunochemistry

Immunochemical staining of Human ki-67 in human gastric cancer with rabbit polyclonal antibody (1 µg/mL, formalin-fixed paraffin embedded sections).



Ki-67 Antibody, Rabbit PAb, Antigen Affinity Purified, Immunochemistry

Immunochemical staining of Human ki-67 in human lung cancer with rabbit polyclonal antibody (1 µg/mL, formalin-fixed paraffin embedded sections).