

Anti-BMI1 antibody



Catalog Number: 104389

Product name

Anti-BMI1 antibody

Specificity

Human BMI1

Antibody description

Rabbit monoclonal to BMI1

Preparation

This antibody was obtained from a rabbit immunized with a synthetic peptide corresponding to the center region of the Human BMI1, and purified by antigen affinity chromatography.

Formulation

0.2 µm filtered solution in PBS

Storage

This antibody can be stored at 2°C-8°C for one month without detectable loss of activity. Antibody products are stable for twelve months from date of receipt when stored at -20°C to -80°C.

Preservative-Free.

Sodium azide is recommended to avoid contamination (final concentration 0.05%-0.1%). It is toxic to cells and should be disposed of properly. Avoid repeated freeze-thaw cycles.

Clonality

Monoclonal

Ig Type

Rabbit IgG

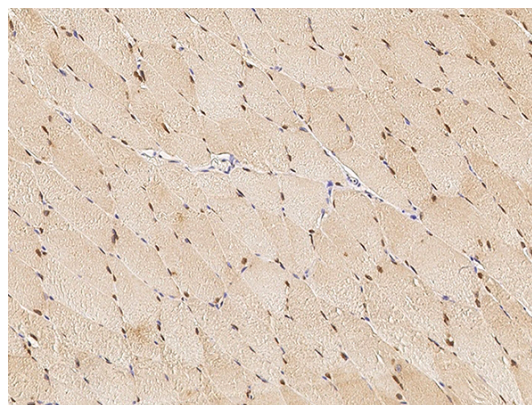
Applications

IHC-P

Dilutions

IHC-P: 1-10 µg/mL

Validations



BMI1 Antibody, Rabbit MAb,
Immunohistochemistry

Immunochemical staining of human BMI1 in human skeletal muscle with rabbit monoclonal antibody (5 µg/mL, formalin-fixed paraffin embedded sections).