

Anti-Cathepsin A/CTSA antibody



Catalog Number: 104372

Product name

Anti-Cathepsin A/CTSA antibody

Immunogen

[Human Cathepsin A/CTSA \(His Tag\) recombinant protein](#)

Specificity

Human Cathepsin A / CTSA

No cross-reactivity in ELISA with Mouse CTSA ; Human CTSZ

Antibody description

Rabbit monoclonal to Cathepsin A/CTSA

Preparation

This antibody was obtained from a rabbit immunized with purified, recombinant Human Cathepsin A / CTSA (rh Cathepsin A / CTSA; NP_001121167.1; Met1-Tyr480).

Formulation

0.2 µm filtered solution in PBS with 5% trehalose

Storage

This antibody can be stored at 2°C-8°C for one month without detectable loss of activity. Antibody products are stable for twelve months from date of receipt when stored at -20°C to -80°C.

Preservative-Free.

Sodium azide is recommended to avoid contamination (final concentration 0.05%-0.1%). It is toxic to cells and should be disposed of properly. Avoid repeated freeze-thaw cycles.

Clonality

Monoclonal

Ig Type

Rabbit IgG

Applications

ELISA, IF, ICC/IF

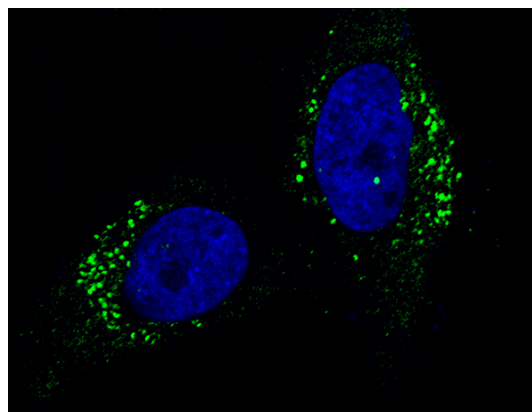
Dilutions

ELISA: 0.1-0.2 µg/mL

This antibody can be used at 0.1-0.2 µg/mL with the appropriate secondary reagents to detect Human CTSA. The detection limit for Human CTSA is approximately 0.00975 ng/well.

ICC/IF: 10-25 µg/mL

Validations



Cathepsin A / CTSA Antibody, Rabbit MAb

Immunofluorescence staining of Human CTSA in HeLa cells. Cells were fixed with 4% PFA, permeabilized with 0.3% Triton X-100 in PBS, blocked with 10% serum, and incubated with rabbit anti-Human CTSA monoclonal antibody (15 µg/ml) at 4°C overnight. Then cells were stained with the Alexa Fluor® 488-conjugated Goat Anti-rabbit IgG secondary antibody (green) and counterstained with DAPI (blue). Positive staining was localized to cytoplasm.