

# Anti-KRT14 antibody



Catalog Number: 104321

## Product name

Anti-KRT14 antibody

WB: 1-10 µg/mL

IHC-P: 0.1-1 µg/mL

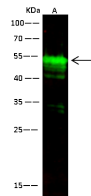
## Specificity

Human Cytokeratin 14

## Validations

## Antibody description

Rabbit polyclonal to KRT14



## Preparation

Produced in rabbits immunized with purified, a synthetic peptide corresponding to the N-terminus of the human Cytokeratin 14, and purified by antigen affinity chromatography.

Items	Lanes
Sample (whole cell lysate)	A431
Sample Volume (µg/lane)	30
Gel	13%SDS-PAGE reducing gel
Recommended Concentration	1-10 µg/ml
Secondary Antibody	DyLight 800-Labeled Antibody to Rabbit IgG (H+L), at 1:5000 dilution. Developed using Odyssey imaging system.
Explanation	Predicted band size : 52 kDa Observed band size : 52 kDa

## Formulation

0.2 µm filtered solution in PBS with 5% trehalose

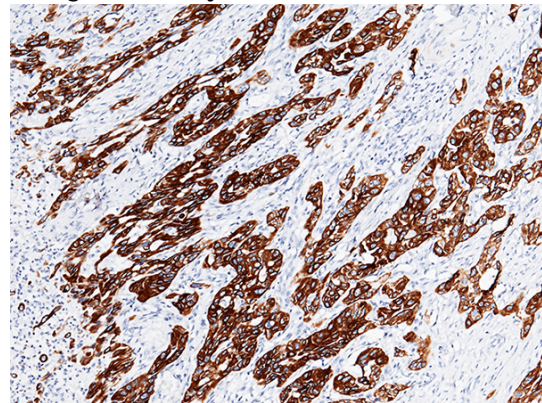
## Storage

This antibody can be stored at 2°C-8°C for one month without detectable loss of activity. Antibody products are stable for twelve months from date of receipt when stored at -20°C to -80°C.

Preservative-Free.

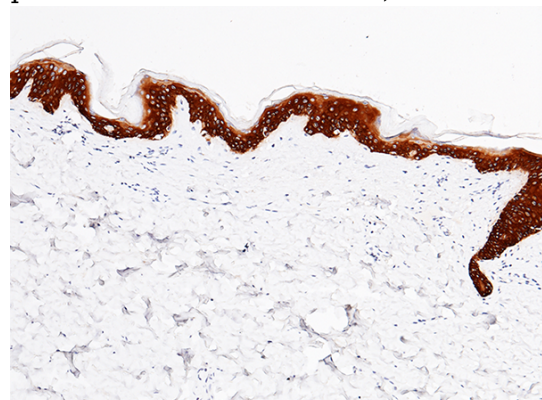
Sodium azide is recommended to avoid contamination (final concentration 0.05%-0.1%). It is toxic to cells and should be disposed of properly. Avoid repeated freeze-thaw cycles.

KRT14 / Cytokeratin 14 Antibody, Rabbit PAb, Antigen Affinity Purified, Western blot



KRT14 / Cytokeratin 14 Antibody, Rabbit PAb, Antigen Affinity Purified, Immunohistochemistry

Immunochemical staining of human CK14 in human esophageal carcinoma with rabbit polyclonal antibody (1 µg/mL, formalin-fixed paraffin embedded sections).



## Clonality

Polyclonal

## Ig Type

Rabbit IgG

## Applications

WB, IHC-P

## Dilutions

# Anti-KRT14 antibody



Catalog Number: 104321

---

KRT14 / Cytokeratin 14 Antibody, Rabbit PAb,  
Antigen Affinity Purified, Immunohistochemistry

Immunochemical staining of human CK14 in

human skin with rabbit polyclonal antibody (1  
 $\mu\text{g}/\text{mL}$ , formalin-fixed paraffin embedded  
sections).