

# Anti-ACTA2 antibody



Catalog Number: 104320

## Product name

Anti-ACTA2 antibody

IHC-P: 0.1-1 µg/mL

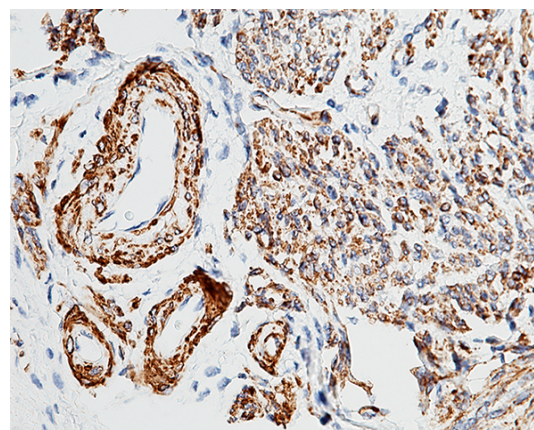
## Specificity

Human Alpha-Smooth Muscle Actin (ACTA2)

## Validations

## Antibody description

Rabbit polyclonal to ACTA2



## Preparation

Produced in rabbits immunized with purified, a synthetic peptide corresponding to the N-terminus of the Human Alpha-Smooth Muscle Actin (ACTA2), and purified by antigen affinity chromatography.

Alpha-Smooth Muscle Actin (ACTA2) Antibody, Rabbit PAb, Antigen Affinity Purified, Immunohistochemistry

## Formulation

0.2 µm filtered solution in PBS with 5% trehalose

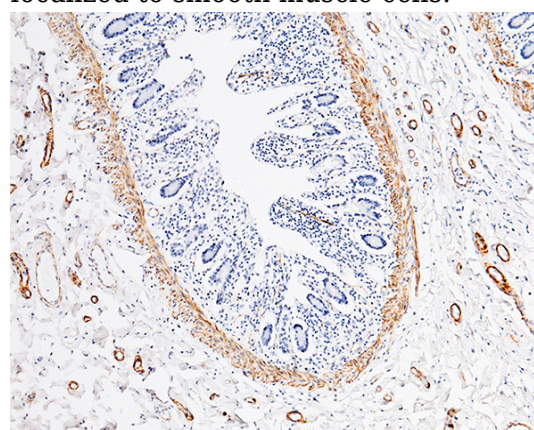
Immunochemical staining of Human Alpha-Smooth Muscle Actin (ACTA2) in human uterus with rabbit polyclonal antibody (0.5 µg/mL, formalin-fixed paraffin embedded sections). Positive staining was localized to smooth muscle cells.

## Storage

This antibody can be stored at 2°C-8°C for one month without detectable loss of activity. Antibody products are stable for twelve months from date of receipt when stored at -20°C to -80°C.

Preservative-Free.

Sodium azide is recommended to avoid contamination (final concentration 0.05%-0.1%). It is toxic to cells and should be disposed of properly. Avoid repeated freeze-thaw cycles.



Alpha-Smooth Muscle Actin (ACTA2) Antibody, Rabbit PAb, Antigen Affinity Purified, Immunohistochemistry

## Clonality

Polyclonal

## Ig Type

Rabbit IgG

## Applications

IHC-P

Immunochemical staining of human Actin in human small intestine with rabbit polyclonal antibody (0.5 µg/mL, formalin-fixed paraffin embedded sections). Positive staining was localized to smooth muscle cells.

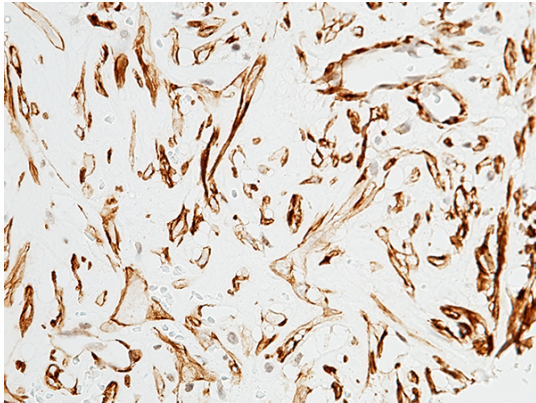
## Dilutions

# Anti-ACTA2 antibody



Catalog Number: 104320

---



Alpha-Smooth Muscle Actin (ACTA2) Antibody,  
Rabbit PAb, Antigen Affinity Purified,  
Immunohistochemistry

Immunochemical staining of Human Alpha-Smooth  
Muscle Actin (ACTA2) in human epididymis with  
rabbit polyclonal antibody (0.5  $\mu\text{g}/\text{mL}$ , formalin-  
fixed paraffin embedded sections). Positive  
staining was localized to smooth muscle cells.