

Anti-Pan Cytokeratin /KRT(pan) antibody



Catalog Number: 104181

Product name

Anti-Pan Cytokeratin /KRT(pan) antibody

Specificity

Human Pan Cytokeratin/KRT(pan)

Antibody description

Rabbit polyclonal to Pan Cytokeratin /KRT(pan)

Preparation

Produced in rabbits immunized with a synthetic peptide corresponding to the N-terminus of the Human Pan Cytokeratin/KRT(pan), and purified by antigen affinity chromatography.

Formulation

0.2 µm filtered solution in PBS

Storage

This antibody can be stored at 2°C-8°C for one month without detectable loss of activity. Antibody products are stable for twelve months from date of receipt when stored at -20°C to -80°C.

Preservative-Free.

Sodium azide is recommended to avoid contamination (final concentration 0.05%-0.1%). It is toxic to cells and should be disposed of properly. Avoid repeated freeze-thaw cycles.

Clonality

Polyclonal

Ig Type

Rabbit IgG

Applications

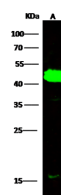
WB, IP

Dilutions

WB: 0.5-10 µg/ml

IP: 1-4 µg/mg of lysate

Validations



Lanes	A
Items	
Sample (whole cell lysate)	COLO205
Sample Volume (µg/lane)	30
Gel	13% SDS-PAGE reducing gel
Recommended Concentration	0.5-10 µg/ml
Secondary Antibody	Dylight 800 labeled Antibody to Rabbit IgG (H+), at 1:5000 dilution.
	Developed using Odyssey imaging system.
Explanation	Predicted band size : 62 kDa Observed band size : 45 kDa Additional bands at : 16kDa (We are unsure as to the identity of these extra bands.)

Pan Cytokeratin / KRT(pan) Antibody, Rabbit PAb, Antigen Affinity Purified, Western blot