

Anti-ATP1B4 antibody



Catalog Number: 104097

Product name

Anti-ATP1B4 antibody

Specificity

Human ATP1B4

Antibody description

Rabbit monoclonal to ATP1B4

Preparation

This antibody was obtained from a rabbit immunized with purified, recombinant Human ATP1B4 (mature form, NP_036201.1; Tyr 132-Thr 357).

Formulation

0.2 μ m filtered solution in PBS with 5% trehalose

Storage

This antibody can be stored at 2°C-8°C for one month without detectable loss of activity. Antibody products are stable for twelve months from date of receipt when stored at -20°C to -80°C. Preservative-Free.

Sodium azide is recommended to avoid contamination (final concentration 0.05%-0.1%). It is toxic to cells and should be disposed of properly. Avoid repeated freeze-thaw cycles.

Clonality

Monoclonal

Ig Type

Rabbit IgG

Applications

ELISA, WB, IP

Dilutions

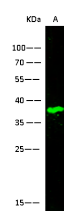
WB: 10-20 μ g/ml

ELISA: 0.1-0.2 μ g/mL

This antibody can be used at 0.1-0.2 μ g/mL with the appropriate secondary reagents to detect Human ATP1B4. The detection limit for Human ATP1B4 is approximately 0.0195 ng/well.

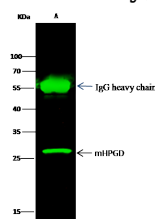
IP: 1-4 μ g/mg of lysate

Validations



Lanes	A
Items	
Sample (Membrane, lysate)	HepG2
Sample Volume (μ g/lane)	20
Gel	13% SDS-PAGE reducing gel
Recommended Concentration	10-20 μ g/ml
Secondary Antibody	Dylight 800-labeled Antibody to Rabbit IgG (H+L), at 1:5000 dilution
Developed	using Odyssey imaging system
Explanation	Predicted band size : 42kDa Observed band size : 38 kDa

ATP1B4 Antibody, Rabbit MAb, Western blot



Lanes	A
Items	
Sample (whole cell lysate)	Caco2
Sample quantity	0.5 mg
IP antibody quantity	2 μ g
Protein G agarose	15 μ l of 50% Protein G Agarose
Gel	13% SDS-PAGE reducing gel
Primary antibody	mIPGD antibody at 5 μ g/ml [Cat# 505-31-R101]
Secondary antibody	Dylight 800-labeled antibody to rabbit IgG (H+L), at 1:5000 dilution

ATP1B4 Antibody, Rabbit MAb,
Immunoprecipitation