

# Anti-CD2 antibody



Catalog Number: 104022

## Product name

Anti-CD2 antibody

## Immunogen

[Mouse CD2 \(His Tag\) recombinant protein](#)

## Specificity

Mouse CD2

**No cross-reactivity** in ELISA with Human CD2

## Antibody description

Rabbit monoclonal to CD2

## Preparation

This antibody was obtained from a rabbit immunized with purified, recombinant Mouse CD2 (rM CD2; NP\_038514.1; Met 1-Ser 203).

## Formulation

0.2 µm filtered solution in PBS with 5% trehalose

## Storage

This antibody can be stored at 2°C-8°C for one month without detectable loss of activity. Antibody products are stable for twelve months from date of receipt when stored at -20°C to -80°C.

Preservative-Free.

Sodium azide is recommended to avoid contamination (final concentration 0.05%-0.1%). It is toxic to cells and should be disposed of properly. Avoid repeated freeze-thaw cycles.

## Clonality

Monoclonal

## Ig Type

Rabbit IgG

## Applications

ELISA, IHC-P

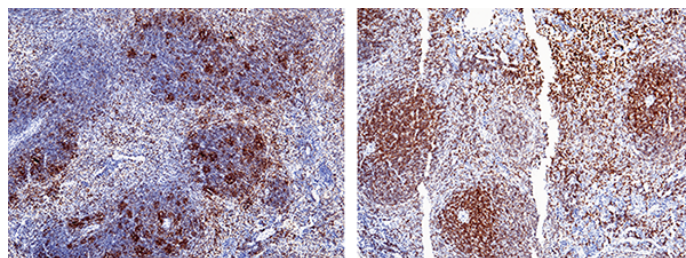
## Dilutions

ELISA: 0.1-0.2 µg/mL

This antibody can be used at 0.1-0.2 µg/mL with the appropriate secondary reagents to detect Mouse CD2. The detection limit for Mouse CD2 is approximately 0.00975 ng/well.

IHC-P: 1-10 µg/mL

## Validations



CD2 Antibody, Rabbit MAb,  
Immunohistochemistry

Immunochemical staining of mouse CD2 in mouse spleen (from 2 donors) with rabbit monoclonal antibody (8 µg/mL, formalin-fixed paraffin embedded sections).