

Anti-GGT1 antibody

Catalog Number: 103938

Product name

Anti-GGT1 antibody

Specificity

Human GGT1

Antibody description

Rabbit polyclonal to GGT1

Preparation

Produced in rabbits immunized with a synthetic peptide corresponding to the center region of the Human GGT1, and purified by antigen affinity chromatography.

Formulation

0.2 µm filtered solution in PBS

Storage

This antibody can be stored at 2°C-8°C for one month without detectable loss of activity. Antibody products are stable for twelve months from date of receipt when stored at -20°C to -80°C.

Preservative-Free.

Sodium azide is recommended to avoid contamination (final concentration 0.05%-0.1%). It is toxic to cells and should be disposed of properly. Avoid repeated freeze-thaw cycles.

Clonality

Polyclonal

Ig Type

Rabbit IgG

Applications

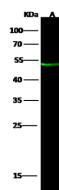
WB, IHC-P

Dilutions

WB: 5-20 µg/ml

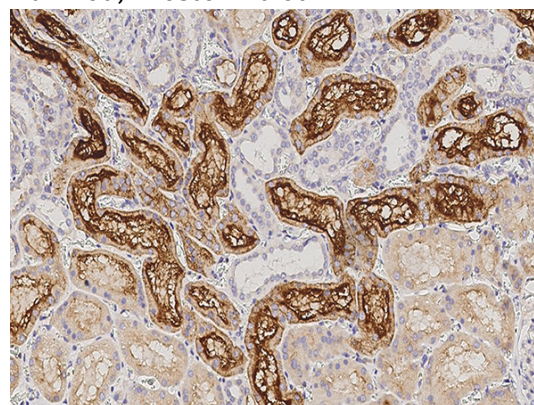
IHC-P: 0.1-2 µg/mL

Validations



Items	Lanes	A
Sample (whole cell lysate)		A549
Sample Volume (µg/lane)		30
Gel		13% SDS-PAGE reducing gel
Recommended Concentration		10 µg/ml
Secondary Antibody		Dylight 800 labeled Antibody to Rabbit IgG (1:1), at 1:5000 dilution
Explanation		Developed using Odyssey imaging system. Predicted band size : 61 kDa Observed band size : 50 kDa

GGT1 Antibody, Rabbit PAb, Antigen Affinity Purified, Western blot



GGT1 Antibody, Rabbit PAb, Antigen Affinity Purified, Immunohistochemistry

Immunochemical staining of human GGT1 in human kidney with rabbit polyclonal antibody (0.5 µg/mL, formalin-fixed paraffin embedded sections).