

# Anti-Green fluorescent protein / GFP antibody



Catalog Number: 103914

## Product name

Anti-Green fluorescent protein / GFP antibody

## Immunogen

[Aequorea victoria Green fluorescent protein / GFP \(His Tag\)](#)

## Specificity

Aequorea victoria GFP

**No cross-reactivity** in ELISA with E.coli cell lysate

## Antibody description

Mouse monoclonal to Green fluorescent protein / GFP

## Preparation

This antibody was produced from a hybridoma resulting from the fusion of a mouse myeloma with B cells obtained from a mouse immunized with purified, recombinant Aequorea victoria GFP (AAB65663; Ser 2-Lys 238). The IgG fraction of the cell culture supernatant was purified by Protein A affinity chromatography.

## Formulation

0.2 µm filtered solution in PBS with 5% trehalose

## Storage

This antibody can be stored at 2°C-8°C for one month without detectable loss of activity. Antibody products are stable for twelve months from date of receipt when stored at -20°C to -80°C.

Preservative-Free.

Sodium azide is recommended to avoid contamination (final concentration 0.05%-0.1%). It is toxic to cells and should be disposed of properly. Avoid repeated freeze-thaw cycles.

## Clonality

Monoclonal

## Ig Type

Mouse IgG1

## Applications

ELISA, IF, IP, ICC/IF

## Dilutions

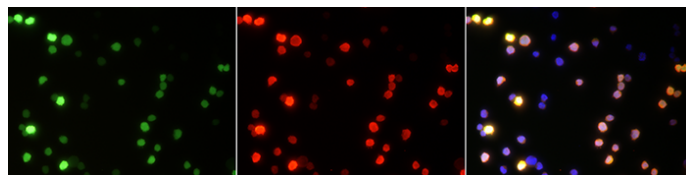
ELISA: 0.5-1 µg/mL

This antibody can be used at 0.5-1 µg/mL with the appropriate secondary reagents to detect Aequorea victoria GFP. The detection limit for Aequorea victoria GFP is approximately 0.16 ng/well.

ICC/IF: 10-25 µg/mL

IP: 1-4 µg/mg of lysate

## Validations



GFP Antibody, Mouse Mab, Immunofluorescence

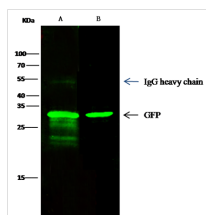
Immunofluorescence staining of GFP protein in CHO cells, transfected with GFP. Cells (left: GFP, middle: antibody, right: merge) were fixed with 4% PFA, blocked with 10% serum, and incubated with Mouse anti-GFP monoclonal antibody (15 µg/ml) at 37°C 1 hour. Then cells were stained with the Alexa Fluor® 594-conjugated Goat Anti-mouse IgG secondary antibody (red) and counterstained with DAPI (blue).

# Anti-Green fluorescent protein / GFP antibody



Catalog Number: 103914

GFP Antibody, Mouse MAb, Immunoprecipitation



Items	Lanes	
	A	B
Sample	GFP transfected E.coli lysate	GFP transfected 293 Cells lysate
Sample quantity	0.5 mg	
IP antibody quantity	2 µg	
Protein G agarose	15 µl of 50% Protein G Agarose	
Gel	15% SDS-PAGE reducing gel	
Primary antibody	GFP antibody at 10 µg/ml [Cat# 13105-R02E]	
Secondary antibody	Dylight 800-labeled antibody to rabbit IgG (H+L), at 1:5000 dilution.	