

Anti-EpCAM/TROP-1/TACSTD1 antibody



Catalog Number: 103862

Product name

Anti-EpCAM/TROP-1/TACSTD1 antibody

Immunogen

[Mouse EpCAM/TROP-1/TACSTD1 \(His Tag\) recombinant protein](#)

Specificity

Mouse EpCAM / TROP-1 / TACSTD1
No cross-reactivity in ELISA with Human EPCAM

Antibody description

Rabbit monoclonal to EpCAM/TROP-1/TACSTD1

Preparation

This antibody was obtained from a rabbit immunized with purified, recombinant Mouse EpCAM / TROP-1 / TACSTD1 (rM EpCAM / TROP-1 / TACSTD1; NP_032558.2; Met 1-Thr 266).

Formulation

0.2 µm filtered solution in PBS with 5% trehalose

Storage

This antibody can be stored at 2°C-8°C for one month without detectable loss of activity. Antibody products are stable for twelve months from date of receipt when stored at -20°C to -80°C. Preservative-Free.

Sodium azide is recommended to avoid contamination (final concentration 0.05%-0.1%). It is toxic to cells and should be disposed of properly. Avoid repeated freeze-thaw cycles.

Clonality

Monoclonal

Ig Type

Rabbit IgG

Applications

ELISA, WB, IHC-P

Dilutions

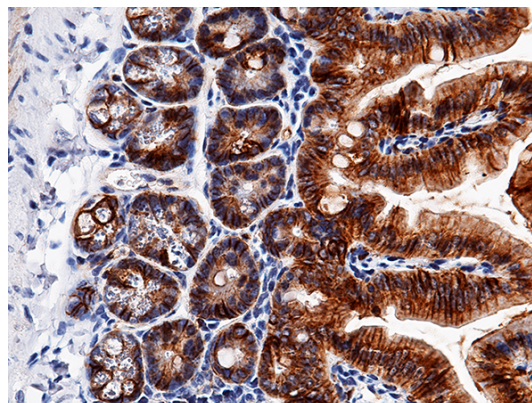
WB: 10-20 µg/mL

ELISA: 0.1-0.2 µg/mL

This antibody can be used at 0.1-0.2 µg/mL with the appropriate secondary reagents to detect Mouse EPCAM. The detection limit for Mouse EPCAM is approximately 0.00245 ng/well.

IHC-P: 1-5 µg/mL

Validations



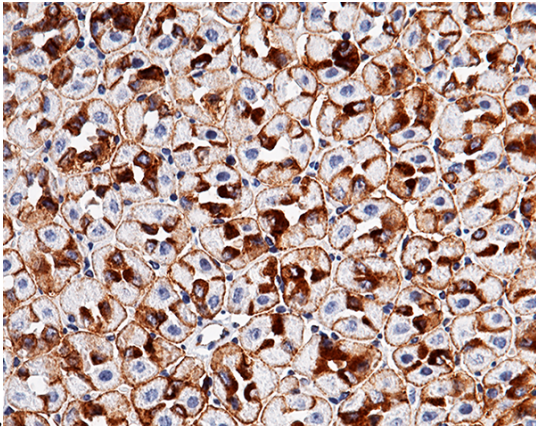
EpCAM / TROP-1 / TACSTD1 Antibody, Rabbit MAb, Immunohistochemistry

Immunochemical staining of mouse EpCAM in mouse intestine with rabbit monoclonal antibody (5 µg/mL, formalin-fixed paraffin embedded)

Anti-EpCAM/TROP-1/TACSTD1 antibody



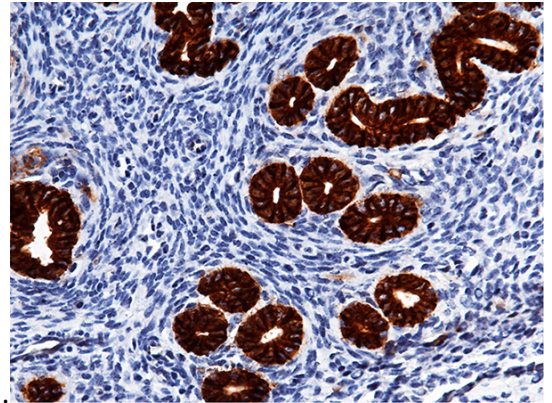
Catalog Number: 103862



sections).

EpCAM / TROP-1 / TACSTD1 Antibody, Rabbit MAb, Immunohistochemistry

Immunochemical staining of mouse EpCAM in mouse stomach with rabbit monoclonal antibody (5 $\mu\text{g}/\text{mL}$, formalin-fixed paraffin embedded



sections).

EpCAM / TROP-1 / TACSTD1 Antibody, Rabbit MAb, Immunohistochemistry

Immunochemical staining of mouse EpCAM in mouse uterus with rabbit monoclonal antibody (5 $\mu\text{g}/\text{mL}$, formalin-fixed paraffin embedded sections).