

Anti-CD20/MS4A1 antibody



Catalog Number: 103843

Product name

Anti-CD20/MS4A1 antibody

Specificity

Human CD20 / MS4A1

Antibody description

Rabbit monoclonal to CD20/MS4A1

Preparation

This antibody was obtained from a rabbit immunized with purified, Human CD20 Transfected CHO Cells and conjugated with FITC under optimum conditions, the unreacted FITC was removed.

Formulation

Aqueous solution containing 0.5% BSA and 0.09% sodium azide

Storage

This antibody is stable for 12 months from date of receipt when stored at 2°C-8°C. Protected from prolonged exposure to light. Do not freeze ! Sodium azide is toxic to cells and should be disposed of properly. Flush with large volumes of water during disposal.

Clonality

Monoclonal

Ig Type

Rabbit IgG

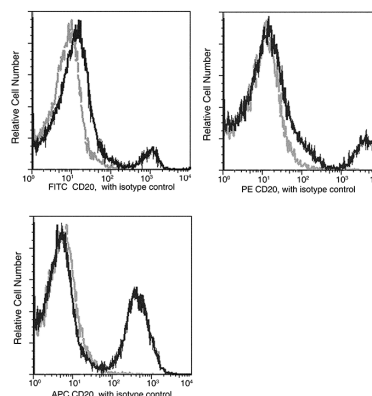
Applications

FCM

Dilutions

FCM

Validations



CD20 / MS4A1 Antibody (FITC), Rabbit MAb, Flow cytometric

Profile of anti-CD20 reactivity on peripheral blood lymphocytes analyzed by flow cytometry.