

# Anti-CoV Spike glycoprotein antibody



Catalog Number: 103762

## Product name

Anti-CoV Spike glycoprotein antibody

## Immunogen

[MERS-CoV CoV Spike glycoprotein \(aa 726-1296, His Tag\)](#)

## Specificity

MERS-CoV (NCoV / Novel coronavirus) Spike Protein S2

## Antibody description

Rabbit polyclonal to CoV Spike glycoprotein

## Preparation

Produced in rabbits immunized with purified, recombinant MERS-CoV (NCoV / Novel coronavirus) Spike Protein S2 (AFS88936.1; Asp726-Pro1296), and purified by antigen affinity chromatography.

## Formulation

0.2 µm filtered solution in PBS

## Storage

This antibody can be stored at 2°C-8°C for one month without detectable loss of activity. Antibody products are stable for twelve months from date of receipt when stored at -20°C to -80°C.

Preservative-Free.

Sodium azide is recommended to avoid contamination (final concentration 0.05%-0.1%). It is toxic to cells and should be disposed of properly. Avoid repeated freeze-thaw cycles.

## Clonality

Polyclonal

## Ig Type

Rabbit IgG

## Applications

ELISA, WB, IHC-P, IP

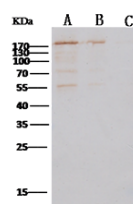
## Dilutions

WB: 0.2-1 µg/ml

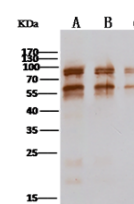
ELISA: 0.1-0.2 µg/ml

This antibody can be used at 0.1-0.2 µg/ml with the appropriate secondary reagents to detect MERS-CoV (NCoV / Novel coronavirus) Spike Protein S2. The detection limit for MERS-CoV (NCoV / Novel coronavirus) Spike Protein S2 is approximately < 0.039 ng/well.

## Validations



Lanes	A	B	C
Sample (Protein)	SH(2C-EMC) (1-1207) 全长		
Sample Volume (ng/lane)	5	1	0.2
Gel	13% SDS-PAGE reducing gel		
Recommended Concentration	0.5-1 µg/ml		
Secondary Antibody	Goat anti Rabbit IgG (H+L)/HRP, 0.4ug/ml.		



Lanes	A	B	C
Sample (Protein)	S2h(2C-EMC)		
Sample Volume (ng/lane)	10	5	2
Gel	13% SDS-PAGE reducing gel		
Recommended Concentration	0.2-0.5 µg/ml		
Secondary Antibody	Goat anti Rabbit IgG (H+L)/HRP, 0.4ug/ml.		

MERS-CoV (HCoV-EMC/2012) Spike Protein S2 Antibody, Rabbit PAb, Antigen Affinity Purified, Western blot