

Anti-CRABP2 antibody



Catalog Number: 103696

Product name

Anti-CRABP2 antibody

Immunogen

[Mouse CRABP2 \(His Tag\) recombinant protein](#)

Specificity

Mouse CRABP2

Antibody description

Rabbit polyclonal to CRABP2

Preparation

Produced in rabbits immunized with purified, recombinant Mouse CRABP2 (rM CRABP2; P22935; Pro 2-Glu 138). CRABP2 specific IgG was purified by Mouse CRABP2 affinity chromatography.

Formulation

0.2 μ m filtered solution in PBS with 5% trehalose

Storage

This antibody can be stored at 2°C-8°C for one month without detectable loss of activity. Antibody products are stable for twelve months from date of receipt when stored at -20°C to -80°C.

Preservative-Free.

Sodium azide is recommended to avoid contamination (final concentration 0.05%-0.1%). It is toxic to cells and should be disposed of properly. Avoid repeated freeze-thaw cycles.

Clonality

Polyclonal

Ig Type

Rabbit IgG

Applications

ELISA, WB, IHC-P

Dilutions

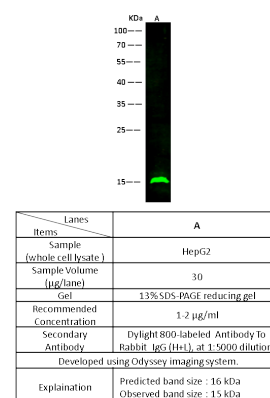
WB: 1-2 μ g/mL

ELISA: 0.1-0.2 μ g/mL

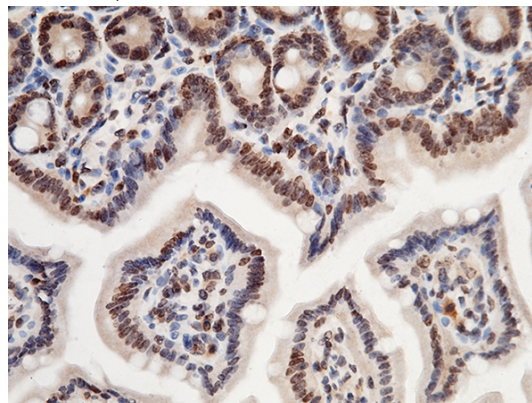
This antibody can be used at 0.1-0.2 μ g/mL with the appropriate secondary reagents to detect Mouse CRABP2. The detection limit for Mouse CRABP2 is approximately 0.00975 ng/well.

IHC-P: 0.1-2 μ g/mL

Validations



CRABP2 Antibody, Rabbit PAb, Antigen Affinity Purified, Western blot



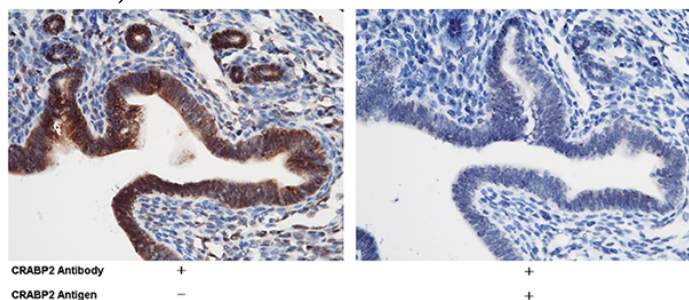
CRABP2 Antibody, Rabbit PAb, Antigen Affinity Purified, Immunohistochemistry

Immunochemical staining of mouse CRABP2 in mouse intestine with rabbit polyclonal antibody (1 μ g/mL, formalin-fixed paraffin embedded

Anti-CRABP2 antibody

Catalog Number: 103696

sections).



CRABP2 Antibody, Rabbit PAb, Antigen Affinity Purified, Immunohistochemistry

Immunochemical staining of mouse CRABP2 in mouse uterus with rabbit polyclonal antibody (1 μ g/mL, formalin-fixed paraffin embedded sections). The left panel: tissue incubated with primary antibody; The right panel: tissue incubated with the mixture of primary antibody and antigen (recombinant protein).