

# Anti-Cathepsin L/CTSL1 antibody



Catalog Number: 103681

## Product name

Anti-Cathepsin L/CTSL1 antibody

## Immunogen

[Mouse Cathepsin L/CTSL1 \(His Tag\) recombinant protein](#)

## Specificity

Mouse Cathepsin L / CTSL

## Antibody description

Rabbit polyclonal to Cathepsin L/CTSL1

## Preparation

Produced in rabbits immunized with purified, recombinant Mouse Cathepsin L / CTSL (rM Cathepsin L / CTSL; P06797; Met 1-Asn 334). Cathepsin L / CTSL specific IgG was purified by Mouse Cathepsin L / CTSL affinity chromatography.

## Formulation

0.2 µm filtered solution in PBS with 5% trehalose

## Storage

This antibody can be stored at 2°C-8°C for one month without detectable loss of activity. Antibody products are stable for twelve months from date of receipt when stored at -20°C to -80°C.

Preservative-Free.

Sodium azide is recommended to avoid contamination (final concentration 0.05%-0.1%). It is toxic to cells and should be disposed of properly. Avoid repeated freeze-thaw cycles.

## Clonality

Polyclonal

## Ig Type

Rabbit IgG

## Applications

ELISA, WB, IP

## Dilutions

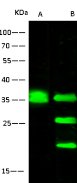
WB: 1-10 µg/mL

ELISA: 0.1-0.2 µg/mL

This antibody can be used at 0.1-0.2 µg/mL with the appropriate secondary reagents to detect Mouse CTSL. The detection limit for Mouse CTSL is approximately 0.00975 ng/well.

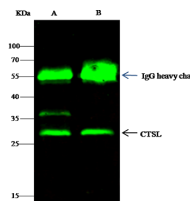
IP: 1-4 µg/mg of lysate

## Validations



Lanes	A	B
Items		
Sample (whole cell lysate)	UB/MG	NIH3T3
Sample Volume (µg/lane)	30	30
Gel	13% SDS-PAGE reducing gel	
Recommended Concentration	1.10 µg/ml	
Secondary Antibody	Dylight 800 labeled Antibody to Rabbit IgG (H+L), at 1:5000 dilution	
Developed using Odyssey imaging system.		
Explanation	Predicted band size : 38 kDa Observed band size : 38 kDa Additional bands at : 27 kDa and 23 kDa (We are unsure as to the identity of these extra bands. They are possible non-specific bindings).	

## Cathepsin L / CTSL Antibody, Rabbit PAb, Antigen Affinity Purified, Western blot



Lanes	A	B
Items		
Sample (whole cell lysate)	A549	HepG2
Sample quantity	0.5 mg	
IP antibody quantity	2 µg	
Protein G agarose	15 µl of 50% Protein G Agarose	
Gel	13% SDS-PAGE reducing gel	
Primary antibody	mCTSL antibody at 10 µg/ml	
Secondary antibody	Dylight 800-labeled antibody to rabbit IgG (H+L), at 1:5000 dilution	

## Cathepsin L / CTSL Antibody, Rabbit PAb, Antigen Affinity Purified