

# Anti-HSPD1/HSP60 antibody



Catalog Number: 103675

## Product name

Anti-HSPD1/HSP60 antibody

WB: 1-10 µg/ml

## Specificity

Human HSPD1 / HSP60

ICC/IF: 0.5-1.5 µg/mL

IP: 0.5-2 uL/mg of lysate

## Antibody description

Rabbit polyclonal to HSPD1/HSP60

## Validations

## Preparation

Produced in rabbits immunized with a synthetic peptide corresponding to the center region of the Human HSPD1 / HSP60, and purified by antigen affinity chromatography.

## Formulation

0.2 µm filtered solution in PBS

## Storage

This antibody can be stored at 2°C-8°C for one month without detectable loss of activity. Antibody products are stable for twelve months from date of receipt when stored at -20°C to -80°C.

Preservative-Free.

Sodium azide is recommended to avoid contamination (final concentration 0.05%-0.1%). It is toxic to cells and should be disposed of properly. Avoid repeated freeze-thaw cycles.

## Clonality

Polyclonal

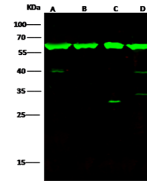
## Ig Type

Rabbit IgG

## Applications

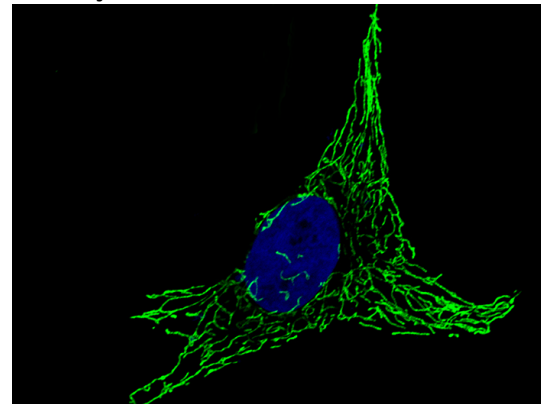
WB, IF, IP, ICC/IF

## Dilutions



Items	Lanes	A	B	C	D
Sample (whole cell lysate)		HepG2	K562	NIH-3T3	A431
Sample Volume (µg/lane)		30	30	30	30
Gel	13% SDS-PAGE reducing gel				
Recommended Concentration	1-10 µg/ml				
Secondary Antibody	Dylight 800 labeled Antibody to Rabbit IgG (H+), at 1:5000 dilution.				
Explanation	Developed using Odyssey imaging system. Predicted band size : 60 kDa Observed band size : 60 kDa Additional bands at : 40 kDa, 35 kDa and 31 kDa (We are unsure as to the identity of these extra bands)				

HSPD1 / HSP60 Antibody, Rabbit PAb, Antigen Affinity Purified, Western blot



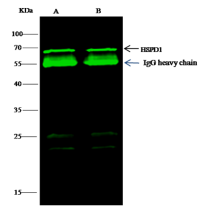
HSPD1 / HSP60 Antibody, Rabbit PAb, Antigen Affinity Purified, Immunofluorescence

Immunofluorescence staining of HSPD1 in HeLa cells. Cells were fixed with 4% PFA, blocked with 10% serum, and incubated with rabbit anti-human HSPD1 polyclonal antibody (1 µg/ml) at 4°C overnight. Then cells were stained with the Alexa

# Anti-HSPD1/HSP60 antibody



Catalog Number: 103675



HSPD1 / HSP60 Antibody, Rabbit PAb, Antigen Affinity Purified, Immunoprecipitation

Lanes	A	B
Sample (whole cell lysate)	HepG2	K562
Sample quantity	0.5 mg	
IP antibody quantity	2 µg	
Immunoaffinity beads Protein G	60 µg	
Gel	13% SDS-PAGE reducing gel	
Primary antibody	KLE-SMCC-SINQA1240 antibody at 10 µg/ml	
Secondary antibody	Dylight 488-labeled antibody to rabbit IgG (H+L), at 1:5000 dilution	

Fluor®488-conjugated