

Anti-EpCAM/TROP-1/TACSTD1 antibody



Catalog Number: 103595

Product name

Rabbit IgG

Anti-EpCAM/TROP-1/TACSTD1 antibody

Applications

Immunogen

ELISA, IHC-P

[Mouse EpCAM/TROP-1/TACSTD1 \(His Tag\) recombinant protein](#)

Dilutions

ELISA: 0.1-0.2 µg/mL

Specificity

This antibody can be used at 0.1-0.2 µg/mL with the appropriate secondary reagents to detect Mouse ACHE. The detection limit for Mouse ACHE is approximately 0.00975 ng/well.

Mouse Acetylcholinesterase / ACHE

Antibody description

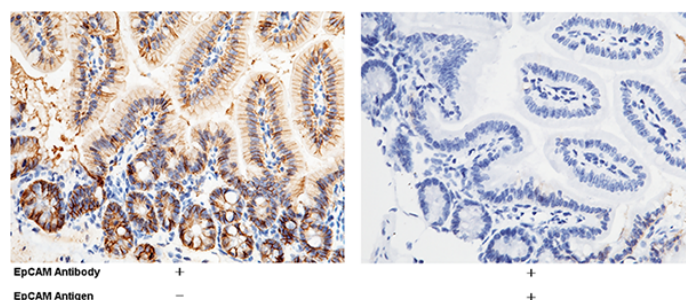
IHC-P: 0.1-2 µg/mL

Rabbit polyclonal to EpCAM/TROP-1/TACSTD1

Preparation

Validations

Produced in rabbits immunized with purified, recombinant Mouse Acetylcholinesterase / ACHE (rM Acetylcholinesterase / ACHE; NP_033729.1; Met 1-Leu 614). Acetylcholinesterase / ACHE specific IgG was purified by Mouse Acetylcholinesterase / ACHE affinity chromatography.



Formulation

EpCAM / TROP-1 / TACSTD1 Antibody, Rabbit PAb, Antigen Affinity Purified, Immunohistochemistry

0.2 µm filtered solution in PBS with 5% trehalose

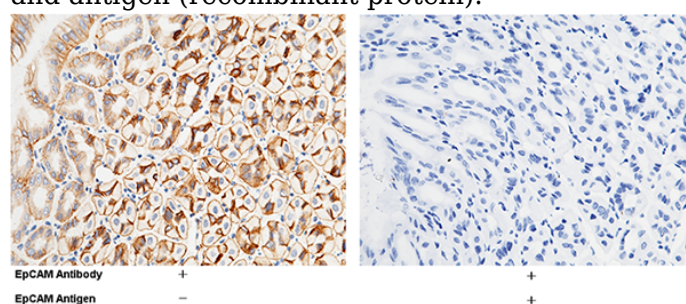
Storage

Immunochemical staining of mouse EpCAM in mouse intestine with rabbit polyclonal antibody (1 µg/mL, formalin-fixed paraffin embedded sections). The left panel: tissue incubated with primary antibody; The right panel: tissue incubated with the mixture of primary antibody and antigen (recombinant protein).

This antibody can be stored at 2°C-8°C for one month without detectable loss of activity. Antibody products are stable for twelve months from date of receipt when stored at -20°C to -80°C.

Preservative-Free.

Sodium azide is recommended to avoid contamination (final concentration 0.05%-0.1%). It is toxic to cells and should be disposed of properly. Avoid repeated freeze-thaw cycles.



Clonality

Polyclonal

Ig Type

EpCAM / TROP-1 / TACSTD1 Antibody, Rabbit

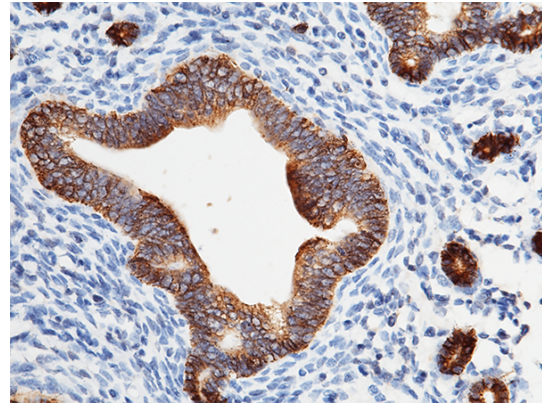
Anti-EpCAM/TROP-1/TACSTD1 antibody



Catalog Number: 103595

PAb, Antigen Affinity Purified,
Immunohistochemistry

Immunochemical staining of mouse EpCAM in mouse stomach with rabbit polyclonal antibody (1 $\mu\text{g}/\text{mL}$, formalin-fixed paraffin embedded sections). The left panel: tissue incubated with primary antibody; The right panel: tissue incubated with the mixture of primary antibody and antigen (recombinant protein).



EpCAM / TROP-1 / TACSTD1 Antibody, Rabbit
PAb, Antigen Affinity Purified,
Immunohistochemistry

Immunochemical staining of mouse EpCAM in mouse uterus with rabbit polyclonal antibody (1 $\mu\text{g}/\text{mL}$, formalin-fixed paraffin embedded sections).