

# Anti-DSC2 antibody



Catalog Number: 103536

## Product name

Anti-DSC2 antibody

## Immunogen

[Human DSC2 \(His Tag\) recombinant protein](#)

## Specificity

Human DSC2

## Antibody description

Rabbit polyclonal to DSC2

## Preparation

Produced in rabbits immunized with purified, recombinant Human DSC2 (rh DSC2; Q02487-1; Met 1-Arg 684). DSC2 specific IgG was purified by Human DSC2 affinity chromatography.

## Formulation

0.2 µm filtered solution in PBS with 5% trehalose

## Storage

This antibody can be stored at 2°C-8°C for one month without detectable loss of activity. Antibody products are stable for twelve months from date of receipt when stored at -20°C to -80°C.

Preservative-Free.

Sodium azide is recommended to avoid contamination (final concentration 0.05%-0.1%). It is toxic to cells and should be disposed of properly. Avoid repeated freeze-thaw cycles.

## Clonality

Polyclonal

## Ig Type

Rabbit IgG

## Applications

ELISA, IHC-P

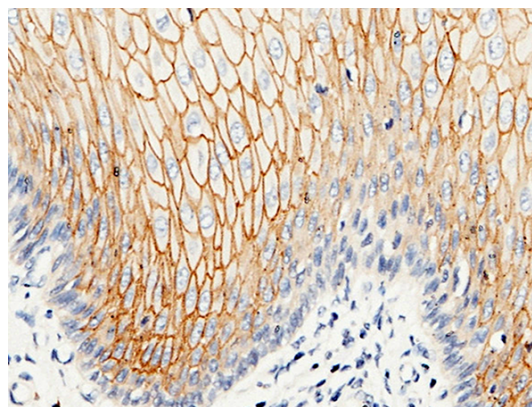
## Dilutions

ELISA: 0.1-0.2 µg/mL

This antibody can be used at 0.1-0.2 µg/mL with the appropriate secondary reagents to detect Human DSC2. The detection limit for Human DSC2 is approximately 0.00245 ng/well.

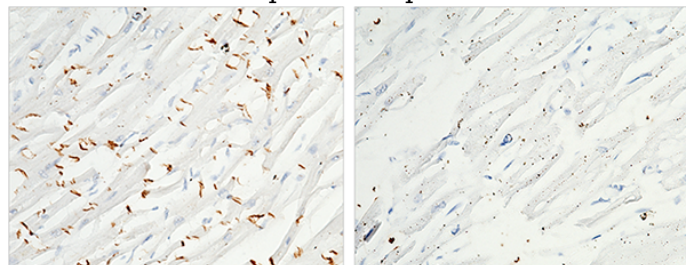
IHC-P: 0.1-2 µg/mL

## Validations



DSC2 Antibody, Rabbit PAb, Antigen Affinity Purified, Immunohistochemistry

Immunochemical staining of human DSC2 in human esophagus with rabbit polyclonal antibody (1 µg/mL, formalin-fixed paraffin embedded sections). Positive staining was localized to membrane of the squamous epithelium.



DSC2 Antibody	+	+
DSC2 Antigen	-	+

DSC2 Antibody, Rabbit PAb, Antigen Affinity Purified, Immunohistochemistry

Immunochemical staining of human DSC2 in human heart with rabbit polyclonal antibody (1

# Anti-DSC2 antibody



Catalog Number: 103536

---

$\mu\text{g/mL}$ , formalin-fixed paraffin embedded sections). Positive staining was localized to intercalated disk. The left panel: tissue incubated

with primary antibody; The right panel: tissue incubated with the mixture of primary antibody and antigen (recombinant protein).