

Anti-KIM-1/TIM1/HACVR1 antibody



Catalog Number: 103433

Product name

Anti-KIM-1/TIM1/HACVR1 antibody

Immunogen

[Human KIM-1/TIM1/HACVR1 \(His Tag\) recombinant protein](#)

Specificity

Human HAVCR1 / TIM1 / KIM1

Antibody description

Rabbit polyclonal to KIM-1/TIM1/HACVR1

Preparation

Produced in rabbits immunized with purified, recombinant Human HAVCR1 / TIM1 / KIM1 (rh HAVCR1 / TIM1 / KIM1; AAC39862.1; Ser 21-Gly 290). HAVCR1 / TIM1 / KIM1 specific IgG was purified by Human HAVCR1 / TIM1 / KIM1 affinity chromatography.

Formulation

0.2 µm filtered solution in PBS with 5% trehalose

Storage

This antibody can be stored at 2°C-8°C for one month without detectable loss of activity. Antibody products are stable for twelve months from date of receipt when stored at -20°C to -80°C.

Preservative-Free.

Sodium azide is recommended to avoid contamination (final concentration 0.05%-0.1%). It is toxic to cells and should be disposed of properly. Avoid repeated freeze-thaw cycles.

Clonality

Polyclonal

Ig Type

Rabbit IgG

Applications

ELISA, WB, IP

Dilutions

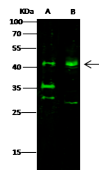
WB: 20-40 µg/mL

ELISA: 0.1-0.2 µg/mL

This antibody can be used at 0.1-0.2 µg/mL with the appropriate secondary reagents to detect Human KIM1. The detection limit for Human KIM1 is approximately 0.00245 ng/well.

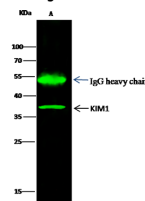
IP: 1-4 µg/mg of lysate

Validations



Items	Lanes	A	B
Sample (Membrane Lysate)		HeLa	MCF7
Sample Volume (µg/lane)		20	
Gel		13% SDS-PAGE reducing gel	
Recommended Concentration		20-40 µg/ml	
Secondary Antibody		DyLight 800 labeled Antibody to Rabbit IgG (H+L) at 1:5000 dilution.	
Explanation		Developed using Odyssey imaging system. Predicted band size : 39 kDa Observed band size : 42 kDa Additional bands at : 35 kDa and 30kDa (We are unsure as to the identity of these extra bands. They are possible non-specific bindings).	

KIM-1 / TIM1 / HACVR1 Antibody, Rabbit PAb, Antigen Affinity Purified, Western blot



Items	Lanes	A
Sample (whole cell lysate)		MCF-7
Sample quantity		0.5 mg
IP antibody quantity		2 µg
Protein G agarose		15 µl of 50% Protein G Agarose
Gel		13% SDS-PAGE reducing gel
Primary antibody		KIM1 antibody at 10 µg/ml [Cat# 11051-NP04]
Secondary antibody		DyLight 800-labeled antibody to rabbit IgG (H+L) at 1:5000 dilution

KIM-1 / TIM1 / HACVR1 Antibody, Rabbit PAb, Antigen Affinity Purified