

Anti-XPNPEP2 antibody



Catalog Number: 103389

Product name

Anti-XPNPEP2 antibody

Immunogen

[Human XPNPEP2 \(His Tag\) recombinant protein](#)

Specificity

Human XPNPEP2

Antibody description

Rabbit polyclonal to XPNPEP2

Preparation

Produced in rabbits immunized with purified, recombinant Human XPNPEP2 (rh XPNPEP2; O43895; Met 1-Ala 650). XPNPEP2 specific IgG was purified by Human XPNPEP2 affinity chromatography.

Formulation

0.2 µm filtered solution in PBS with 5% trehalose

Storage

This antibody can be stored at 2°C-8°C for one month without detectable loss of activity. Antibody products are stable for twelve months from date of receipt when stored at -20°C to -80°C.

Preservative-Free.

Sodium azide is recommended to avoid contamination (final concentration 0.05%-0.1%). It is toxic to cells and should be disposed of properly. Avoid repeated freeze-thaw cycles.

Clonality

Polyclonal

Ig Type

Rabbit IgG

Applications

ELISA, IHC-P

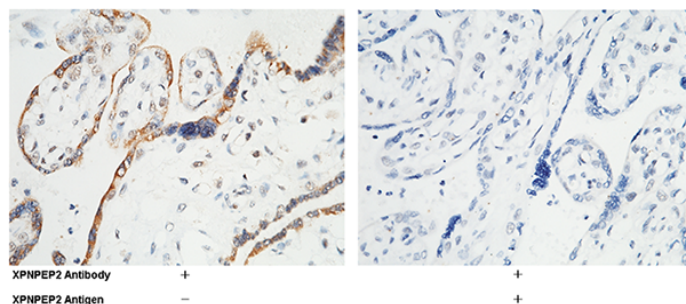
Dilutions

ELISA: 0.1-0.2 µg/mL

This antibody can be used at 0.1-0.2 µg/mL with the appropriate secondary reagents to detect Human XPNPEP2. The detection limit for Human XPNPEP2 is approximately 0.00245 ng/well.

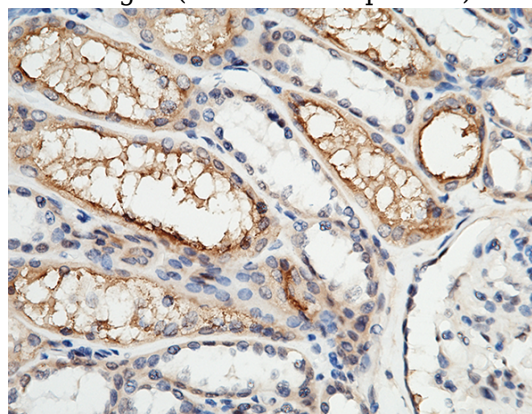
IHC-P: 0.1-1 µg/mL

Validations



XPNPEP2 Antibody, Rabbit PAb, Antigen Affinity Purified, Immunohistochemistry

Immunochemical staining of human XPNPEP2 in human placenta with rabbit polyclonal antibody (0.8 µg/mL, formalin-fixed paraffin embedded sections). The left panel: tissue incubated with primary antibody; The right panel: tissue incubated with the mixture of primary antibody and antigen (recombinant protein).



XPNPEP2 Antibody, Rabbit PAb, Antigen Affinity Purified, Immunohistochemistry

Anti-XPNPEP2 antibody



Catalog Number: 103389

Immunochemical staining of human XPNPEP2 in human kidney with rabbit polyclonal antibody (1

µg/mL, formalin-fixed paraffin embedded sections).