

# Anti-CALML5 antibody



Catalog Number: 103382

## Product name

Anti-CALML5 antibody

## Immunogen

[Human CALML5 \(His & GST Tag\) recombinant protein](#)

## Specificity

Human CALML5

## Antibody description

Rabbit polyclonal to CALML5

## Preparation

Produced in rabbits immunized with purified, recombinant Human CALML5 (rh CALML5; AAH39172.1; Met 1-Glu 146). CALML5 specific IgG was purified by Human CALML5 affinity chromatography.

## Formulation

0.2 µm filtered solution in PBS with 5% trehalose

## Storage

This antibody can be stored at 2°C-8°C for one month without detectable loss of activity. Antibody products are stable for twelve months from date of receipt when stored at -20°C to -80°C.

Preservative-Free.

Sodium azide is recommended to avoid contamination (final concentration 0.05%-0.1%). It is toxic to cells and should be disposed of properly. Avoid repeated freeze-thaw cycles.

## Clonality

Polyclonal

## Ig Type

Rabbit IgG

## Applications

ELISA, IHC-P

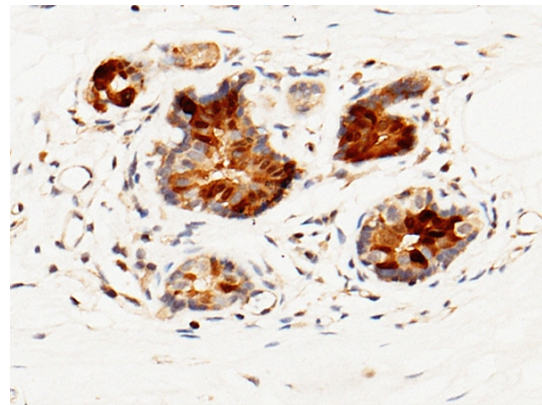
## Dilutions

ELISA: 0.1-0.2 µg/mL

This antibody can be used at 0.1-0.2 µg/mL with the appropriate secondary reagents to detect Human CALML5. The detection limit for Human CALML5 is approximately 0.00245 ng/well.

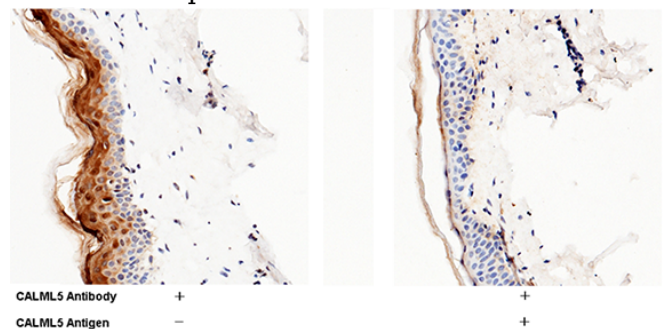
IHC-P: 0.1-2 µg/mL

## Validations



CALML5 Antibody, Rabbit PAb, Antigen Affinity Purified, Immunohistochemistry

Immunochemical staining of human CALML5 in human mammary adenocarcinoma with rabbit polyclonal antibody (1 µg/mL, formalin-fixed paraffin embedded sections). Positive staining was localized to epithelium.



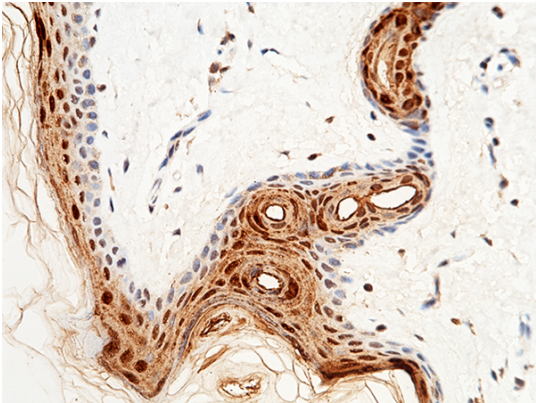
CALML5 Antibody, Rabbit PAb, Antigen Affinity Purified, Immunohistochemistry

# Anti-CALML5 antibody

Catalog Number: 103382

---

Immunochemical staining of human CALML5 in human skin (from donor 1) with rabbit polyclonal antibody (1  $\mu\text{g}/\text{mL}$ , formalin-fixed paraffin embedded sections). Positive staining was localized to epithelium. The left panel: tissue incubated with primary antibody; The right panel: tissue incubated with the mixture of primary antibody and antigen (recombinant protein).



CALML5 Antibody, Rabbit PAb, Antigen Affinity Purified, Immunohistochemistry

Immunochemical staining of human CALML5 in human skin (from donor 2) with rabbit polyclonal antibody (1  $\mu\text{g}/\text{mL}$ , formalin-fixed paraffin embedded sections). Positive staining was localized to epithelium.