

Anti-Cadherin-17/LI-cadherin antibody



Catalog Number: 103166

Product name

Anti-Cadherin-17/LI-cadherin antibody

Immunogen

[Human Cadherin-17/LI-cadherin \(His Tag\) recombinant protein](#)

Specificity

Human CDH17 / Cadherin-17

Antibody description

Rabbit polyclonal to Cadherin-17/LI-cadherin

Preparation

Produced in rabbits immunized with purified, recombinant Human CDH17 / Cadherin-17 (rh CDH17 / Cadherin-17; Met 1-Met 787; Q12864-1). CDH17 / Cadherin-17 specific IgG was purified by Human CDH17 / Cadherin-17 affinity chromatography.

Formulation

0.2 µm filtered solution in PBS with 5% trehalose

Storage

This antibody can be stored at 2°C-8°C for one month without detectable loss of activity. Antibody products are stable for twelve months from date of receipt when stored at -20°C to -80°C.

Preservative-Free.

Sodium azide is recommended to avoid contamination (final concentration 0.05%-0.1%). It is toxic to cells and should be disposed of properly. Avoid repeated freeze-thaw cycles.

Clonality

Polyclonal

Ig Type

Rabbit IgG

Applications

ELISA, WB, IHC-P, IP

Dilutions

WB: 1-5 µg/mL

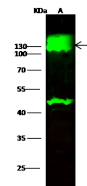
ELISA: 0.1-0.2 µg/mL

This antibody can be used at 0.1-0.2 µg/mL with the appropriate secondary reagents to detect Human CDH17. The detection limit for Human CDH17 is approximately 0.00975 ng/well.

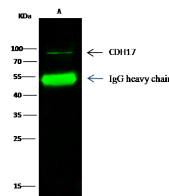
IHC-P: 0.1-2 µg/mL

IP: 4-6 µg/mg of lysate

Validations



| Lanes | A |
|---|---|
| Sample (whole cell lysate) | COI.0205 |
| Sample Volume (µg/lane) | 30 |
| Gel | 13% SDS-PAGE reducing gel |
| Recommended Concentration | 1-5 µg/ml |
| Secondary Antibody | Dylight 800-labeled Antibody To Rabbit IgG (H+L), at 1:5000 dilution. |
| Developed using Odyssey imaging system. | |
| Explanation | Predicted band size: 92 kDa Observed band size: 130 kDa Additional bands at: 45 kDa (We are unsure as to the identity of these extra bands. They are possible non-specific bindings). |



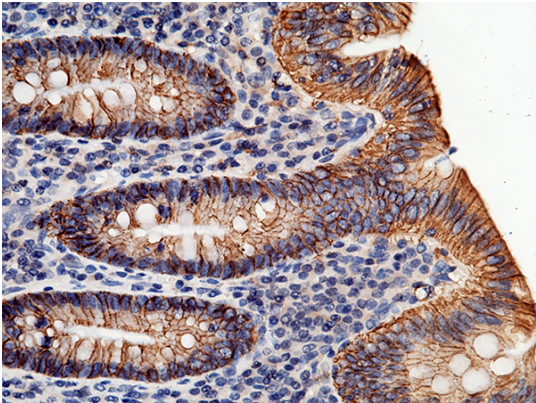
| Lanes | A |
|----------------------------|---|
| Sample (whole cell lysate) | Jurkat |
| Sample quantity | 0.5 mg |
| IP antibody quantity | 2 µg |
| Protein G agarose | 15 µl of 50% Protein G Agarose |
| Gel | 13% SDS-PAGE reducing gel |
| Primary antibody | CDH17 antibody at 10 µg/ml [Cat# 11360-RP02] |
| Secondary antibody | Dylight 800-labeled antibody to Rabbit IgG (H+L), at 1:5000 dilution. |

Cadherin-17 / LI-cadherin / CDH17 Antibody, Rabbit PAb, Antigen Affinity Purified, Immunoprecipitation

Anti-Cadherin-17/LI-cadherin antibody

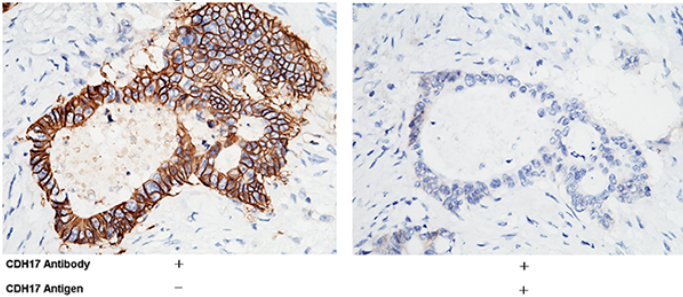


Catalog Number: 103166



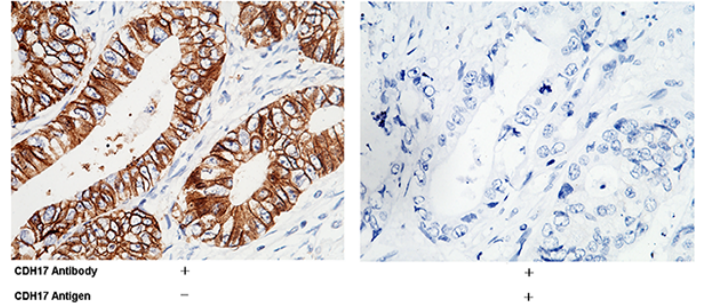
Cadherin-17 / LI-cadherin / CDH17 Antibody, Rabbit PAb, Antigen Affinity Purified, Immunohistochemistry

Immunochemical staining of human CDH17 in human appendix with rabbit polyclonal antibody (1 µg/mL, formalin-fixed paraffin embedded sections). The image showing membrane staining of intestinal gland.



Cadherin-17 / LI-cadherin / CDH17 Antibody, Rabbit PAb, Antigen Affinity Purified, Immunohistochemistry

Immunochemical staining of human CDH17 in human colon carcinoma with rabbit polyclonal antibody (1 µg/mL, formalin-fixed paraffin embedded sections). The image showing membrane staining of colonic gland. The left panel: tissue incubated with primary antibody; The right panel: tissue incubated with the mixture of primary antibody and antigen (recombinant protein).



Cadherin-17 / LI-cadherin / CDH17 Antibody, Rabbit PAb, Antigen Affinity Purified, Immunohistochemistry

Immunochemical staining of human CDH17 in human rectal carcinoma with rabbit polyclonal antibody (1 µg/mL, formalin-fixed paraffin embedded sections). The image showing membrane staining of intestinal gland. The left panel: tissue incubated with primary antibody; The right panel: tissue incubated with the mixture of primary antibody and antigen (recombinant protein).