

Anti-GPT2 antibody



Catalog Number: 103118

Product name

Anti-GPT2 antibody

Immunogen

[Rat GPT2 \(His Tag\) recombinant protein](#)

Specificity

Rat GPT2

Antibody description

Rabbit polyclonal to GPT2

Preparation

Produced in rabbits immunized with purified, recombinant Rat GPT2 (rR GPT2; Met 1-Ser 522; NP_001012057.1). GPT2 specific IgG was purified by Rat GPT2 affinity chromatography.

Formulation

0.2 µm filtered solution in PBS with 5% trehalose

Storage

This antibody can be stored at 2°C-8°C for one month without detectable loss of activity. Antibody products are stable for twelve months from date of receipt when stored at -20°C to -80°C.

Preservative-Free.

Sodium azide is recommended to avoid contamination (final concentration 0.05%-0.1%). It is toxic to cells and should be disposed of properly. Avoid repeated freeze-thaw cycles.

Clonality

Polyclonal

Ig Type

Rabbit IgG

Applications

ELISA, IHC-P

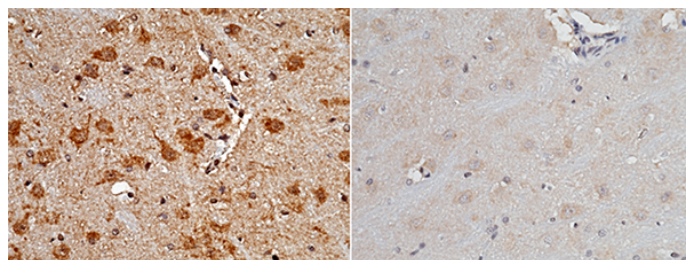
Dilutions

ELISA: 0.5-1 µg/mL

This antibody can be used at 0.5-1 µg/mL with the appropriate secondary reagents to detect Rat Gpt2. The detection limit for Rat Gpt2 is approximately 0.039 ng/well.

IHC-P: 0.1-2 µg/mL

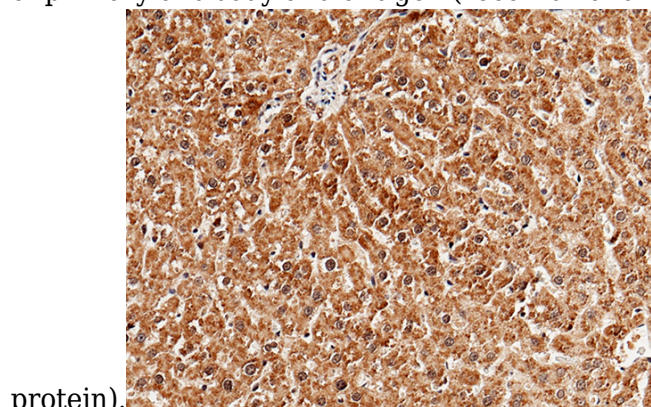
Validations



Rat GPT2 Antibody	+	+
Rat GPT2 Antigen	-	+

GPT2 Antibody, Rabbit PAb, Antigen Affinity Purified, Immunohistochemistry

Immunochemical staining of rat GPT2 in rat brain with rabbit polyclonal antibody (1 µg/mL, formalin-fixed paraffin embedded sections). The left panel: tissue incubated with primary antibody; The right panel: tissue incubated with the mixture of primary antibody and antigen (recombinant



protein).

GPT2 Antibody, Rabbit PAb, Antigen Affinity Purified, Immunohistochemistry

Immunochemical staining of rat GPT2 in rat liver

Anti-GPT2 antibody



Catalog Number: 103118

with rabbit polyclonal antibody (1 $\mu\text{g}/\text{mL}$,

formalin-fixed paraffin embedded sections).