

# Anti-Cathepsin B/CTSB antibody



Catalog Number: 103117

## Product name

Anti-Cathepsin B/CTSB antibody

## Immunogen

[Human Cathepsin B/CTSB \(His Tag\) recombinant protein](#)

## Specificity

Human Cathepsin B / CTSB

## Antibody description

Rabbit polyclonal to Cathepsin B/CTSB

## Preparation

Produced in rabbits immunized with purified, recombinant Human Cathepsin B / CTSB (rh Cathepsin B / CTSB; NP\_001899.1). Cathepsin B / CTSB specific IgG was purified by Human Cathepsin B / CTSB affinity chromatography.

## Formulation

0.2 µm filtered solution in PBS with 5% trehalose

## Storage

This antibody can be stored at 2°C-8°C for one month without detectable loss of activity. Antibody products are stable for twelve months from date of receipt when stored at -20°C to -80°C.

Preservative-Free.

Sodium azide is recommended to avoid contamination (final concentration 0.05%-0.1%). It is toxic to cells and should be disposed of properly. Avoid repeated freeze-thaw cycles.

## Clonality

Polyclonal

## Ig Type

Rabbit IgG

## Applications

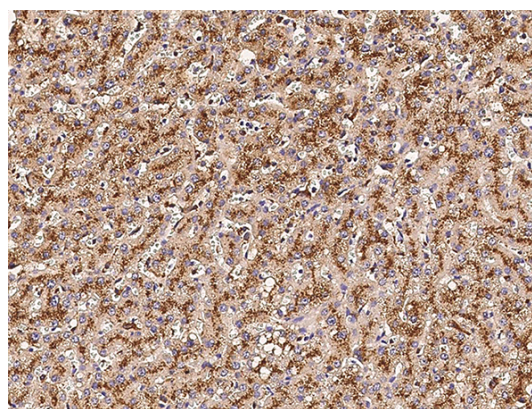
WB, IHC, IP

## Dilutions

IHC-P: 0.1-2 µg/mL

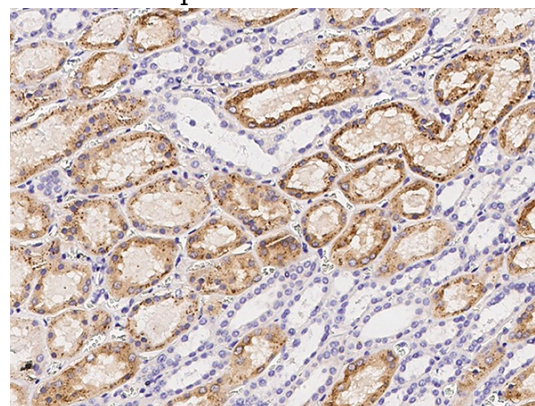
IP: 1-4 µg/mg of lysate

## Validations



Cathepsin B Antibody, Rabbit PAb, Antigen Affinity Purified, Immunohistochemistry

Immunochemical staining of human CTSB in human liver with rabbit polyclonal antibody (0.5 µg/mL, formalin-fixed paraffin embedded



sections).

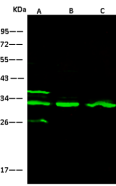
Cathepsin B Antibody, Rabbit PAb, Antigen Affinity Purified, Immunohistochemistry

Immunochemical staining of human CTSB in human kidney with rabbit polyclonal antibody (0.5 µg/mL, formalin-fixed paraffin embedded

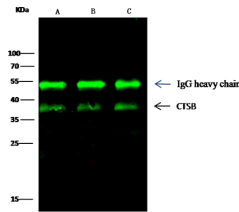
# Anti-Cathepsin B/CTSB antibody



Catalog Number: 103117



Lanes	A	B	C
Items			
Sample (whole cell lysate)	AS49	HepG2	RAW264.7
Sample Volume (µg/lane)	30	30	30
Gel	13% SDS-PAGE reducing gel		
Recommended Concentration	5-10 µg/ml		
Secondary Antibody	Dylight 800-labeled Antibody To Rabbit IgG (H+L), at 1:5000 dilution.		
Explanation	Developed using Odyssey imaging system. Predicted band size: 38 kDa Observed band size: 33 kDa Additional bands at: 36 kDa and 26 kDa (We are unsure as to the identity of these extra bands. They are possible non-specific bindings).		



Lanes	A	B	C
Items			
Sample (whole cell lysate)	HepG2	RAW264.7	AS49
Sample quantity	0.5 mg		
IP antibody quantity	2 µg		
Protein G agarose	15 µl of 50% Protein G Agarose		
Gel	13% SDS-PAGE reducing gel		
Primary antibody	CTSB antibody at 5 µg/ml [Cat# 10483-RP02]		
Secondary antibody	Dylight 800-labeled antibody to rabbit IgG (H+L), at 1:5000 dilution.		

sections).

Cathepsin B Antibody, Rabbit PAb, Antigen Affinity Purified, Western blot

Cathepsin B Antibody, Rabbit PAb, Antigen Affinity Purified, Immunoprecipitation