

# Anti-IL1RL1 antibody



Catalog Number: 103107

## Product name

Anti-IL1RL1 antibody

## Immunogen

[Human IL1RL1 recombinant protein](#)

## Specificity

Human IL1RL1 / ST2

## Antibody description

Rabbit polyclonal to IL1RL1

## Preparation

Produced in rabbits immunized with purified, recombinant Human IL1RL1 / ST2 (rh IL1RL1 / ST2; aa 1-328; NP\_003847.2). Total IgG was purified by Protein A affinity chromatography.

## Formulation

0.2  $\mu$ m filtered solution in PBS with 5% trehalose

## Storage

This antibody can be stored at 2°C-8°C for one month without detectable loss of activity. Antibody products are stable for twelve months from date of receipt when stored at -20°C to -80°C.

Preservative-Free.

Sodium azide is recommended to avoid contamination (final concentration 0.05%-0.1%). It is toxic to cells and should be disposed of properly. Avoid repeated freeze-thaw cycles.

## Clonality

Polyclonal

## Ig Type

Rabbit IgG

## Applications

ELISA, WB

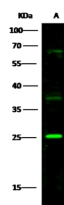
## Dilutions

WB: 5-10  $\mu$ g/ml

ELISA: 0.5-1.0  $\mu$ g/mL

This antibody can be used at 0.5-1.0  $\mu$ g/mL with the appropriate secondary reagents to detect Human IL1RL1. The detection limit for Human IL1RL1 is approximately 0.00245 ng/well.

## Validations



Items	Lanes
Sample (whole cell lysate)	Daudi
Sample Volume ( $\mu$ g/lane)	30
Gel	13% SDS-PAGE reducing gel
Recommended Concentration	5-10 $\mu$ g/ml
Secondary Antibody	Dylight 800-labeled Antibody To Rabbit IgG (H+L), at 1:5000 dilution.

IL1RL1 Antibody, Rabbit PAb, Western blot