

Anti-MEP1A antibody



Catalog Number: 103072

Product name

Anti-MEP1A antibody

Immunogen

[Mouse MEP1A \(His Tag\) recombinant protein](#)

Specificity

Mouse MEP1A

Antibody description

Rabbit monoclonal to MEP1A

Preparation

This antibody was obtained from a rabbit immunized with purified, recombinant Mouse MEP1A (rM MEP1A; NP_032611.2; Met 1-Arg 615).

Formulation

0.2 µm filtered solution in PBS with 5% trehalose

Storage

This antibody can be stored at 2°C-8°C for one month without detectable loss of activity. Antibody products are stable for twelve months from date of receipt when stored at -20°C to -80°C.

Preservative-Free.

Sodium azide is recommended to avoid contamination (final concentration 0.05%-0.1%). It is toxic to cells and should be disposed of properly. Avoid repeated freeze-thaw cycles.

Clonality

Monoclonal

Ig Type

Rabbit IgG

Applications

ELISA, IHC-P

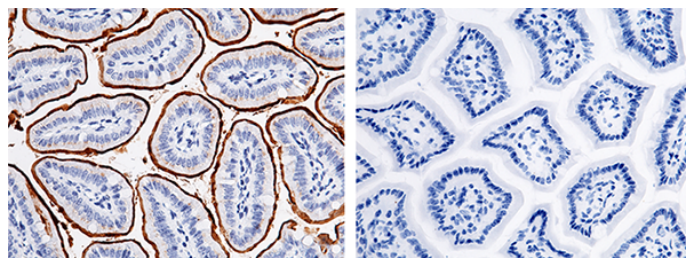
Dilutions

ELISA: 0.1-0.2 µg/mL

This antibody can be used at 0.1-0.2 µg/mL with the appropriate secondary reagents to detect Mouse MEP1A. The detection limit for Mouse MEP1A is approximately 0.00245 ng/well.

IHC-P: 1-10 µg/mL

Validations

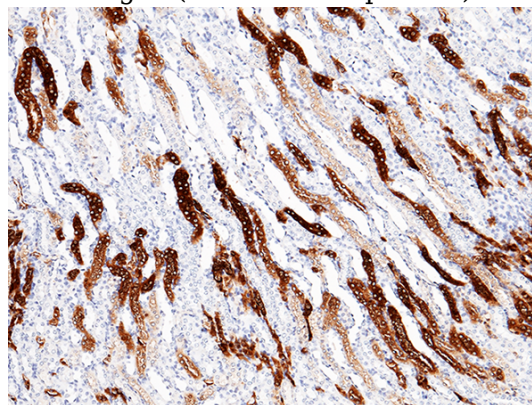


MEP1A Antibody +

MEP1A Antigen -

MEP1A Antibody, Rabbit MAb,
Immunohistochemistry

Immunochemical staining of mouse MEP1A in mouse intestine with rabbit monoclonal antibody (5 µg/mL, formalin-fixed paraffin embedded sections). The left panel: tissue incubated with primary antibody; The right panel: tissue incubated with the mixture of primary antibody and antigen (recombinant protein).



MEP1A Antibody, Rabbit MAb,
Immunohistochemistry

Anti-MEP1A antibody



Catalog Number: 103072

Immunochemical staining of mouse MEP1A in mouse kidney with rabbit monoclonal antibody (5

µg/mL, formalin-fixed paraffin embedded sections).