

Anti-CD69 / CLEC2C antibody



Catalog Number: 103027

Product name

Anti-CD69 / CLEC2C antibody

Immunogen

[Human CD69 / CLEC2C \(His Tag\) recombinant protein](#)

Specificity

Human CD69

Antibody description

Rabbit monoclonal to CD69 / CLEC2C

Preparation

This antibody was obtained from a rabbit immunized with purified, recombinant Human CD69 (rh CD69; NP_001772.1; Ser 62-Lys 199).

Formulation

0.2 μ m filtered solution in PBS with 5% trehalose

Storage

This antibody can be stored at 2°C-8°C for one month without detectable loss of activity. Antibody products are stable for twelve months from date of receipt when stored at -20°C to -80°C.

Preservative-Free.

Sodium azide is recommended to avoid contamination (final concentration 0.05%-0.1%). It is toxic to cells and should be disposed of properly. Avoid repeated freeze-thaw cycles.

Clonality

Monoclonal

Ig Type

Rabbit IgG

Applications

ELISA, WB, IP

Dilutions

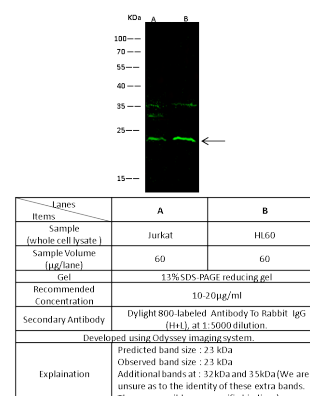
WB: 10-20 μ g/ml

ELISA: 0.1-0.2 μ g/mL

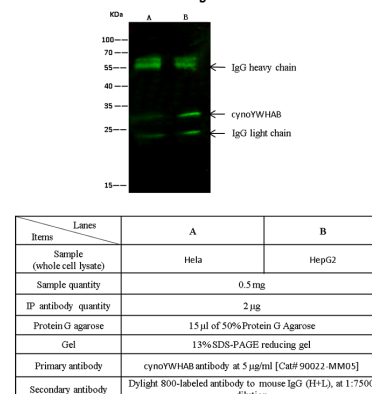
This antibody can be used at 0.1-0.2 μ g/mL with the appropriate secondary reagents to detect Human CD69. The detection limit for Human CD69 is approximately 0.0049 ng/well.

IP: 4-6 μ g/mg of lysate

Validations



CD69 Antibody, Rabbit MAb, Western blot



CD69 Antibody, Rabbit MAb, Immunoprecipitation