

Anti-S100A6 antibody



Catalog Number: 102938

Product name

Anti-S100A6 antibody

Immunogen

[Mouse S100A6 recombinant protein](#)

Specificity

Mouse S100A6 / Calcyclin / CACY
No cross-reactivity in ELISA with Human S100A1; Human S100A2 / CAN19 / S100L

Antibody description

Rabbit monoclonal to S100A6

Preparation

This antibody was obtained from a rabbit immunized with purified, recombinant Mouse S100A6 / Calcyclin (rM S100A6; Met 1-Lys 89; NP_035443.1).

Formulation

0.2 µm filtered solution in PBS with 5% trehalose

Storage

This antibody can be stored at 2°C-8°C for one month without detectable loss of activity. Antibody products are stable for twelve months from date of receipt when stored at -20°C to -80°C.

Preservative-Free.

Sodium azide is recommended to avoid contamination (final concentration 0.05%-0.1%). It is toxic to cells and should be disposed of properly. Avoid repeated freeze-thaw cycles.

Clonality

Monoclonal

Ig Type

Rabbit IgG

Applications

ELISA, IHC-P

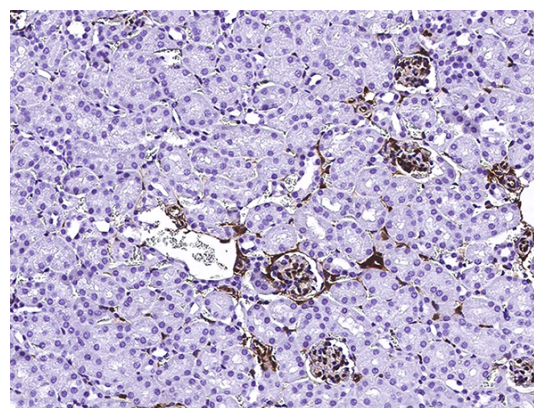
Dilutions

ELISA: 0.1-0.2 µg/mL

This antibody can be used at 0.1-0.2 µg/mL with the appropriate secondary reagents to detect Mouse S100A6. The detection limit for Mouse S100A6 is approximately 0.00245 ng/well.

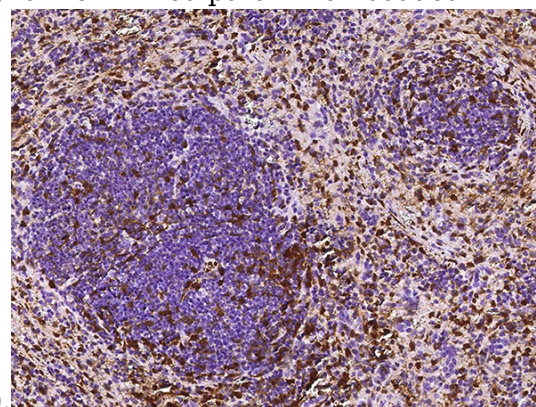
IHC-P: 1-10 µg/mL

Validations



S100A6 / Calcyclin / CACY Antibody, Rabbit MAb, Immunochemistry

Immunochemical staining of mouse S100A6 in mouse kidney with rabbit monoclonal antibody (5µg/mL, formalin-fixed paraffin embedded



sections).

S100A6 / Calcyclin / CACY Antibody, Rabbit MAb, Immunochemistry

Anti-S100A6 antibody



Catalog Number: 102938

Immunochemical staining of mouse S100A6 in mouse spleen with rabbit monoclonal antibody

(5µg/mL, formalin-fixed paraffin embedded sections).