

# Anti-MESDC2 antibody



Catalog Number: 102789

## Product name

Anti-MESDC2 antibody

## Immunogen

[Human MESDC2 \(His Tag\) recombinant protein](#)

## Specificity

Human MESDC2 / MESD

## Antibody description

Rabbit polyclonal to MESDC2

## Preparation

Produced in rabbits immunized with purified, recombinant Human MESDC2 (rh MESDC2; NP\_055969.1; Ala 34-Lys 230). MESDC2 specific IgG was purified by human MESDC2 affinity chromatography

## Formulation

0.2 µm filtered solution in PBS with 5% trehalose

## Storage

This antibody can be stored at 2°C-8°C for one month without detectable loss of activity. Antibody products are stable for twelve months from date of receipt when stored at -20°C to -80°C.

Preservative-Free.

Sodium azide is recommended to avoid contamination (final concentration 0.05%-0.1%). It is toxic to cells and should be disposed of properly. Avoid repeated freeze-thaw cycles.

## Clonality

Polyclonal

## Ig Type

Rabbit IgG

## Applications

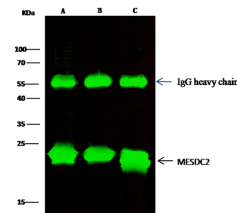
WB, IP

## Dilutions

WB: 1-5 µg/mL

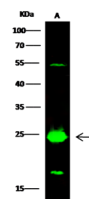
IP: 1-4 µg/mg of lysate

## Validations



Items \ Lanes	A	B	C
Sample (whole cell lysate)	293T	Hela	NIH-3T3
Sample quantity	0.5 mg		
IP antibody quantity	2 µg		
Protein G agarose	15 µl of 50% Protein G Agarose		
Gel	13% SDS-PAGE reducing gel		
Primary antibody	MESDC2 antibody at 2 µg/ml [Cat# 10949-RP02]		
Secondary antibody	Dylight 800-labeled antibody to rabbit IgG (H+L), at 1:5000 dilution.		

## MESDC2 / MESD Antibody, Rabbit PAb, Antigen



Items \ Lanes	A
Sample (whole cell lysate)	HEK293
Sample Volume (µg/lane)	30
Gel	13% SDS-PAGE reducing gel
Recommended Concentration	1-5 µg/ml
Secondary Antibody	Dylight 800-labeled Antibody To Rabbit IgG (H+L), at 1:5000 dilution.

## Affinity Purified

MESDC2 / MESD Antibody, Rabbit PAb, Antigen Affinity Purified, Western blot