

# Anti-C-Reactive Protein/CRP antibody



Catalog Number: 102783

## Product name

Anti-C-Reactive Protein/CRP antibody

## Immunogen

[Mouse C-Reactive Protein/CRP \(His Tag\)](#)

## Specificity

Mouse C-reactive / CRP

## Antibody description

Rabbit polyclonal to C-Reactive Protein/CRP

## Preparation

Produced in rabbits immunized with purified, recombinant Mouse CRP (rM CRP; NP\_031794.3; Met 1-Ser 225). CRP IgG was purified by mouse CRP affinity chromatography

## Formulation

0.2 µm filtered solution in PBS with 5% trehalose

## Storage

This antibody can be stored at 2°C-8°C for one month without detectable loss of activity. Antibody products are stable for twelve months from date of receipt when stored at -20°C to -80°C.

Preservative-Free.

Sodium azide is recommended to avoid contamination (final concentration 0.05%-0.1%). It is toxic to cells and should be disposed of properly. Avoid repeated freeze-thaw cycles.

## Clonality

Polyclonal

## Ig Type

Rabbit IgG

## Applications

ELISA, WB

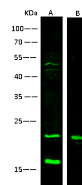
## Dilutions

WB: 5-10 µg/mL

ELISA: 0.1-0.2 µg/mL

This antibody can be used at 0.1-0.2 µg/mL with the appropriate secondary reagents to detect Mouse CRP. The detection limit for Mouse CRP is approximately 0.00975 ng/well.

## Validations



lanes	A	B
Items		
Sample (culture cell lysate)	HepG2	Jurkat
Sample Volume (µg/lane)	30	30
Gel	13% SDS-PAGE reducing gel	
Recommended Concentration	5-10 µg/ml	
Secondary Antibody	Dylight 800-labeled Antibody to Rabbit IgG (H+L) at 1:5000 dilution	
	Developed using Odyssey imaging system.	
Explanation	Predicted band size : 22 kDa Observed band size : 22 kDa Additional bands at : 47 kDa and 17 kDa [We are unsure as to the identity of these extra bands. They are possible non-specific bindings].	

CRP / C-reactive Protein Antibody, Rabbit PAb, Antigen Affinity Purified, Western blot