

# Anti-CKMT1A antibody



Catalog Number: 102640

## Product name

Anti-CKMT1A antibody

## Immunogen

[Human CKMT1A \(His Tag\) recombinant protein](#)

## Specificity

Human CKMT1A

## Antibody description

Rabbit polyclonal to CKMT1A

## Preparation

Produced in rabbits immunized with purified, recombinant Human CKMT1A (rh CKMT1A; P12532-1; Ala40-His417). CKMT1A specific IgG was purified by Human CKMT1A affinity chromatography.

## Formulation

0.2 µm filtered solution in PBS

## Storage

This antibody can be stored at 2°C-8°C for one month without detectable loss of activity. Antibody products are stable for twelve months from date of receipt when stored at -20°C to -80°C.

Preservative-Free.

Sodium azide is recommended to avoid contamination (final concentration 0.05%-0.1%). It is toxic to cells and should be disposed of properly. Avoid repeated freeze-thaw cycles.

## Clonality

Polyclonal

## Ig Type

Rabbit IgG

## Applications

ELISA, WB, IP

## Dilutions

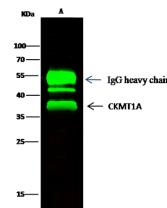
WB: 5-10 µg/mL

ELISA: 0.1-0.2 µg/mL

This antibody can be used at 0.1-0.2 µg/mL with the appropriate secondary reagents to detect Human CKMT1A. The detection limit for Human CKMT1A is < 0.039 ng/well.

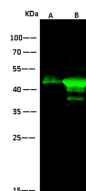
IP: 1-4 µg/mg of lysate

## Validations



Items	Lanes	A
Sample (whole cell lysate)		A431
Sample quantity		0.5 mg
IP antibody quantity		2 µg
Protein G agarose		15 µl of 50% Protein G Agarose
Gel		13% SDS-PAGE reducing gel
Primary antibody		His-CKMT1A antibody at 5 µg/ml
Secondary antibody		Dylight 800-labeled antibody to rabbit IgG (H+L), at 1:5000 dilution.

CKMT1A Antibody, Rabbit PAb, Antigen Affinity Purified, Immunoprecipitation



Items	Lanes	A	B
Sample (whole cell lysate)		HeLa	A431
Sample Volume (µg/lane)		30	30
Gel		13% SDS-PAGE reducing gel	
Recommended Concentration		5-10 µg/ml	
Secondary Antibody		Dylight 800-labeled Antibody to Rabbit IgG (H+L), at 1:5000 dilution.	
Explanation		Developed using Odyssey imaging system. Predicted band size : 47 kDa Observed band size : 47 kDa Additional bands at : 37 kDa (We are unsure as to the identity of these extra bands. They are possible non-specific bindings).	

CKMT1A Antibody, Rabbit PAb, Antigen Affinity Purified, Western blot