

Anti-KIM-1/TIM1/HACVR1 antibody



Catalog Number: 102538

Product name

Anti-KIM-1/TIM1/HACVR1 antibody

Immunogen

[Canine KIM-1/TIM1/HACVR1 \(His Tag\) recombinant protein](#)

Specificity

Canine KIM-1 / TIMD-1 / HAVCR1

Antibody description

Rabbit monoclonal to KIM-1/TIM1/HACVR1

Preparation

This antibody was obtained from a rabbit immunized with purified, recombinant Canine HAVCR1 extracellular domain (rCanine TIMD-1 / HAVCR1; XP_854888.1; Tyr 21-Ser 160).

Formulation

0.2 µm filtered solution in PBS with 5% trehalose

Storage

This antibody can be stored at 2°C-8°C for one month without detectable loss of activity. Antibody products are stable for twelve months from date of receipt when stored at -20°C to -80°C.

Preservative-Free.

Sodium azide is recommended to avoid contamination (final concentration 0.05%-0.1%). It is toxic to cells and should be disposed of properly. Avoid repeated freeze-thaw cycles.

Clonality

Monoclonal

Ig Type

Rabbit IgG

Applications

ELISA, IHC-P

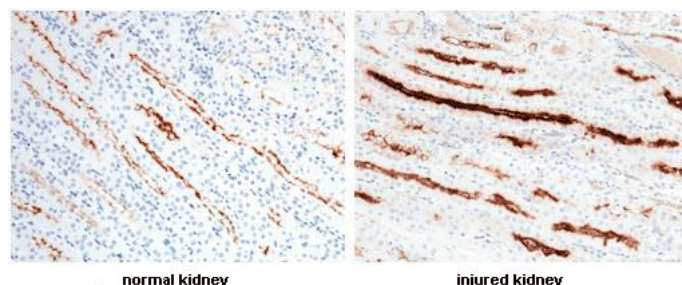
Dilutions

ELISA: 0.1-0.2 µg/mL

This antibody can be used at 0.1-0.2 µg/mL with the appropriate secondary reagents to detect Canine TIMD1. The detection limit for Canine TIMD1 is approximately 0.00975 ng/well.

IHC-P: 0.5-2 µg/mL

Validations



KIM-1 / TIMD-1 / HAVCR1 Antibody, Rabbit MAb, Immunohistochemistry

Immunochemical staining of Canine KIM1 in canine kidney with rabbit monoclonal antibody (0.5 µg/mL, formalin-fixed paraffin embedded sections).